

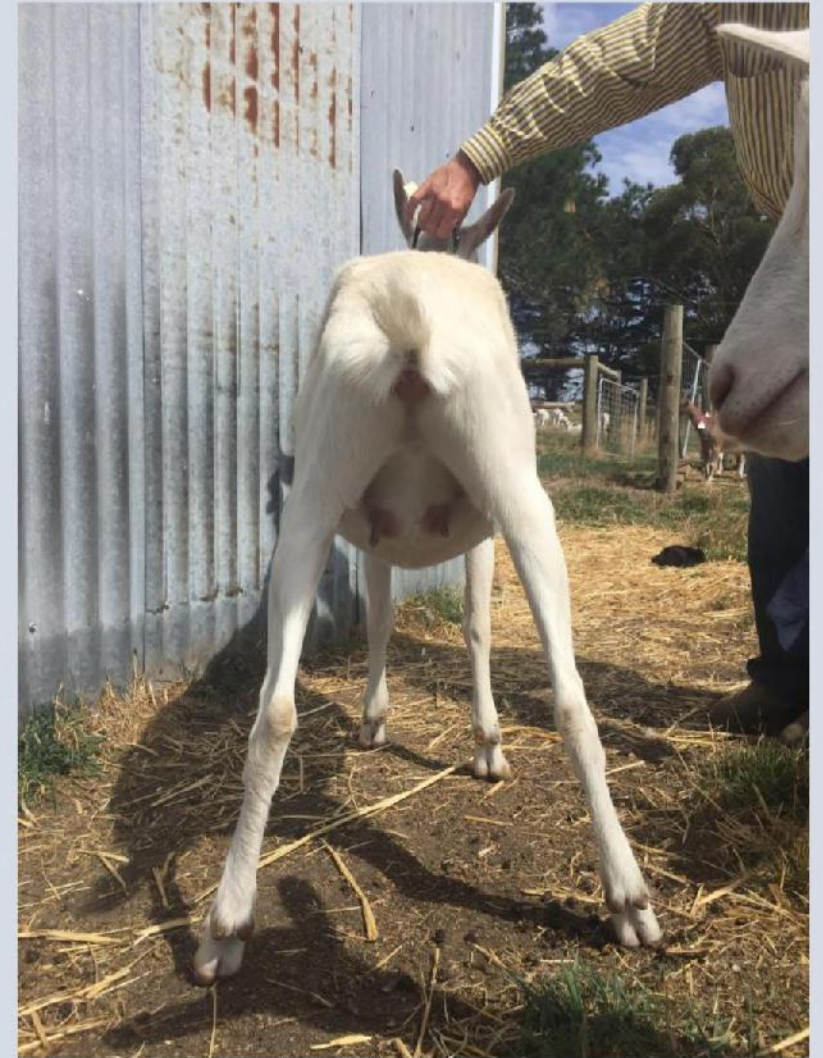
GOATLING & DOE KID CLASSES

JUDGE: MURRAY GRILLS

CLASS 16 SAANEN GOATLING EXHIBIT NO 19

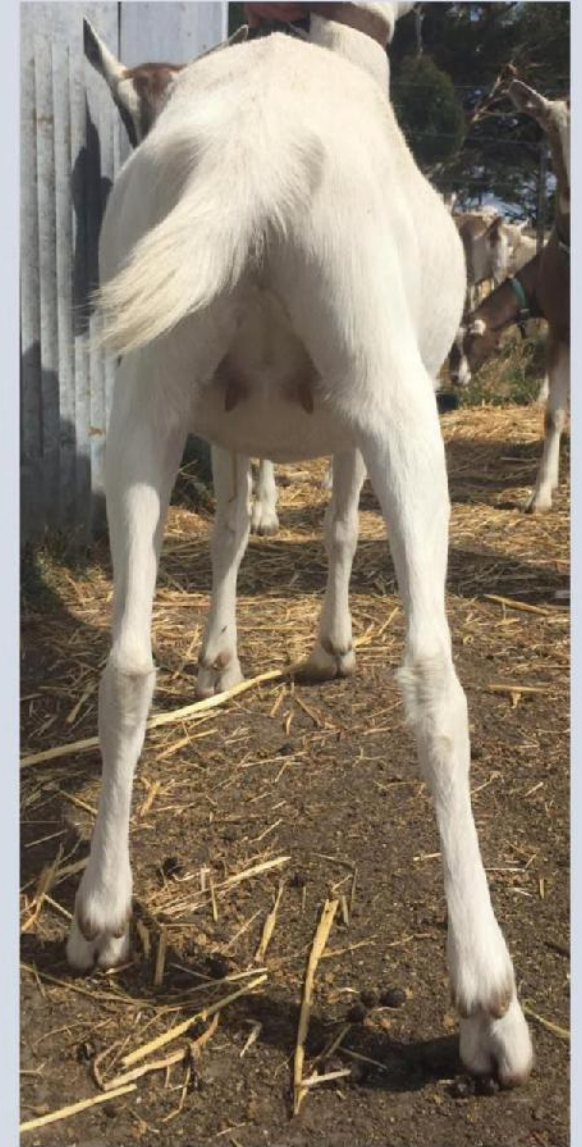
RODEN LEON KIT

1/2/20



CLASS 16 SAANEN GOATLING EXHIBIT NO 20

26/1/20 RODEN CONNETICUT LOTTIE



SAANEN GOATLING

- 1⁵** **Exhibit 19** This young doe has length and blend. Her long neckline smoothes through the shoulders and sets off a level strong topline. Her stance is upright and balanced and legs are straight through hock and forequarter, a lovely blended and balanced doe.
- RODEN LEON KIT BELINDA CARDINAL
- 2ND** **Exhibit 20** Elements of this doe are surprising particularly over the rump. She displays a long level rump that from the rear shows breadth in the pin bones. Her depth of chest and girth are impressive and her spring through the ribcage is generous
- RODEN CONNETICUT LOTTIE BELINDA CARDINAL.
- 3RD**

CLASS 18 TOGGENBURG GOATLING EXHIBIT NO 21

26/11/19

RODEN LANDO VERITY



CLASS 18 TOGGENBURG GOATLING EXHIBIT NO 22

6/9/19

RODEN ZERO'S WINONA



CLASS 18 TOGGENBURG GOATLING EXHIBIT NO 23

DOB 30/9/19 EDENDALE AGATHA



CLASS 18 TOGGENBURG GOATLING EXHIBIT NO 24

16/10/19

KUDUMBA TORA



CLASS 18 TOGGENBURG GOATLING EXHIBIT NO 25

30/9/19

SKY DREAMS BELLBIRD



TOGGENBURG GOATLING

15 Exhibit 23

This doe displays power and confidence. Before I give a critique, exhibitors please try to find ground that allows me to judge all aspects, in particular pasterns. I can see the erect nature of this doe that the pasterns are strong and upright but a judge should never assume and photos should allow me to judge all parts of the animal. That aside this is a solid yet finely blended animal. The neckline blends into powerful shoulders with a prominent brisket. The length of barrel is dramatic, with a beautiful depth and roundness to the barrel girth. The topline is textbook, raised wither through to a level chine and loin meeting broad thurls and an almost level rump. Her stance is exaggerated in the rear but this has not affected the topline. She is a great example of the Toggenburg Breed
EDENDALE AGATHA EDENDALE FARM

2ND Exhibit 25

This young doe has many traits examined above. I love her broad square stance to the rear. Her topline and level rump are powerful breed factors and she displays a long, well sprung torso. Most impressive is the upright and balanced stance
SKYDREAMS BELLBIRD. CARRIE FLORENCE

3RD Exhibit 21

A lovely doe with great head and neckline. This doe exhibits the trademark length of body and her balance and squareness through the hock displays breadth for a future udder. As this one matures, these aspects will be enhanced. A beautiful example for Toggenburgs.

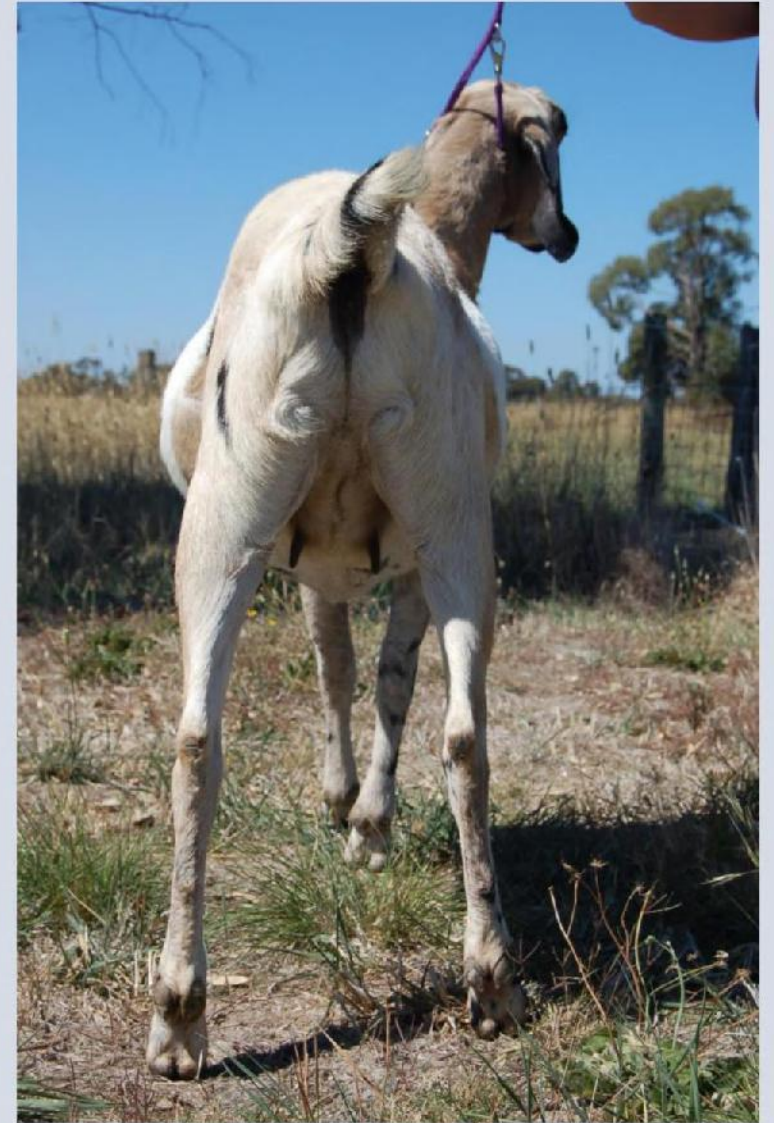
RODEN LANDO VERITY BELINDA CARDINAL

The class of Toggenburgs had great dairy character and strength in constitution. Exhibit 26 exudes that strength of character, particularly through the neck and forequarter. I particularly like the length over the rump on this doe.
Exhibit 22 is maturing nicely and she immediately has the eyeline drawn to her level topline. She also has the length to the barrel as well as a beautiful square hock.

CLASS 19 AN GOATLING EXHIBIT NO 26

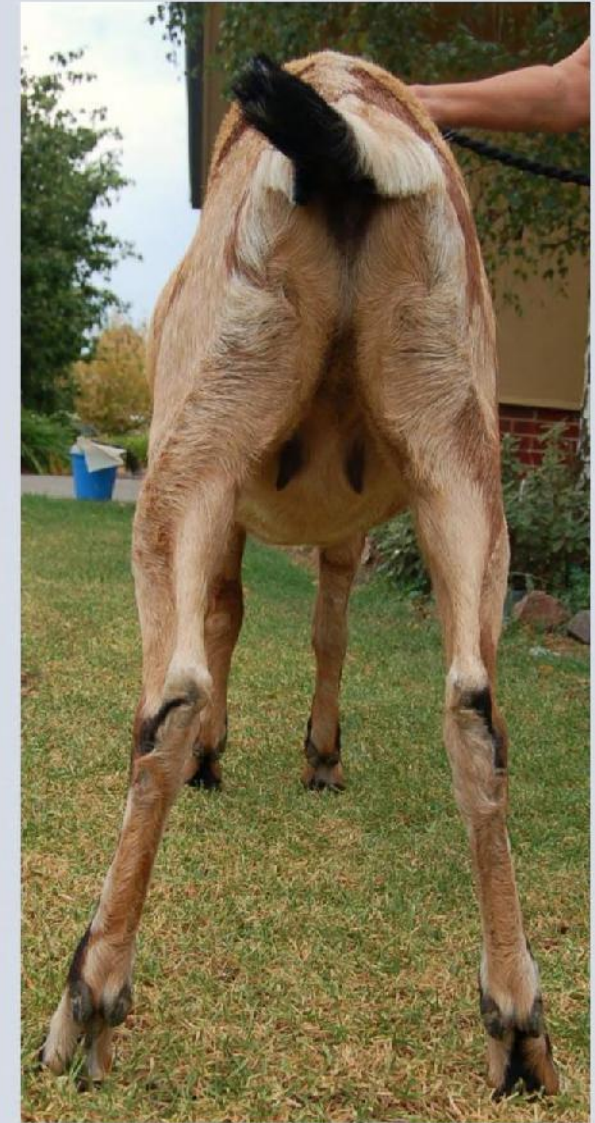
DOB 5/6/19

ANAMAARYA



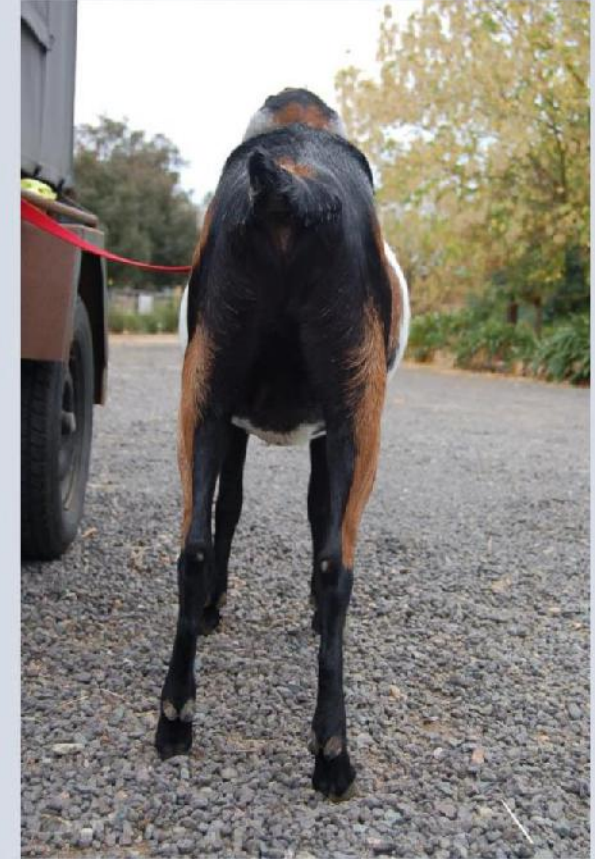
CLASS 19 AN GOATLING EXHIBIT NO 27

DOB 13/6/19 ANAMA SURI



CLASS 19 AN GOATLING EXHIBIT NO 28

DOB 9/6/19 ANAMA SANSA



CLASS 19 AN GOATLING EXHIBIT NO 29

DOB 24/9/19 SKYDREAMS TINY THING



CLASS 19 AN GOATLING EXHIBIT NO 30

DOB 23/9/19 SKYDREAMS CLARINET



ANGLO NUBIAN GOATLING

1ST Exhibit 28

Although the photo has a first ribbon being held, this was disregarded (please try to have photos that keep the animal anonymous to the judge). This doe has an impressive head with ears that start hanging almost below the eyeline. Her neck is long and with that distinctive cylindrical shape that blends into the shapely withers and shoulders. She displays the Nubian trait of the backline rising to the thurl but maintains a long level rump. Her stance is strong and square and the barrel shows depth and good spring of rib. The depth of chest is highlighted by the distinctive brisket. A lovely doe.

ANAMA SANSA DEB PORTER

2ND Exhibit 26

This doe displays a length of barrel and a lovely upright stance through the rear quarters. Her broad square stance through the hocks is a highlight. A good depth of barrel and strong forequarters are a feature. This doe deserves a more detailed examination particularly of her gait and balance. She is an extremely classy doe.

ANAMA ARYA BRYONY LEPOIDEVIN

3RD Exhibit 30

A shapely doe, this Nubian has a great barrel and an impressive long level topline. Her stance is square and upright with good balance over the rump. An impressive young doe.

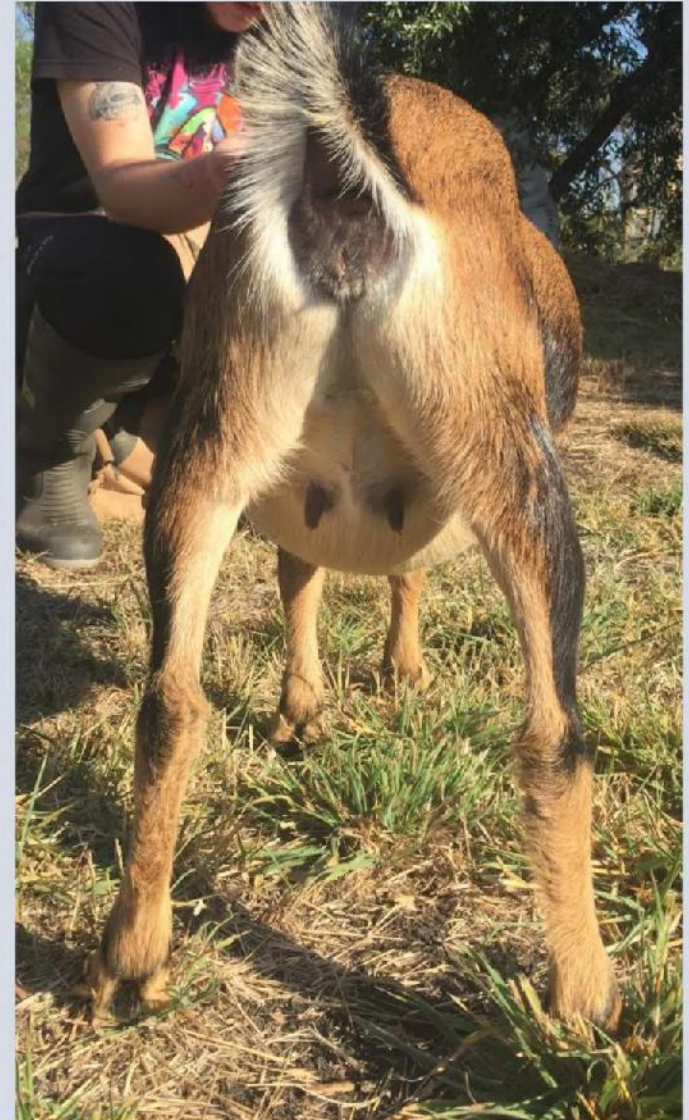
SKYDREAMS CLARINET CARRIE FLORENCE

Exhibit 27 has length through the torso and has an exotic head with good ear length. Her chest and brisket are prominent with a pronounced curvature of the sickle in the rear legs. Great potential showing here. Exhibit 29 is also displaying a strong topline with a long rump. Her elegant neck length is a feature.

Overall the Nubian goatlings all displayed a great dairy character and promise for the breed into the future.

CLASS 22 NIGERIAN DWARF GOATLING EXHIBIT NO 31

DOB 18/3/20 RODEN SQUEAK



NIGERIAN DWARF GOATLING

15

Exhibit 31

This Nigerian Dwarf didn't have competition but displayed the characteristics that must be on display. Nigerians are the miniature dairy breed and accordingly the strong level topline, deep barrel and level square rump is on display. The neck blending to the shoulder and the prominent wither are commendable and her stance in the rear hock is square and broad. A worthy winner in this class.

RODEN SQUEAK BELINDA CARDINAL

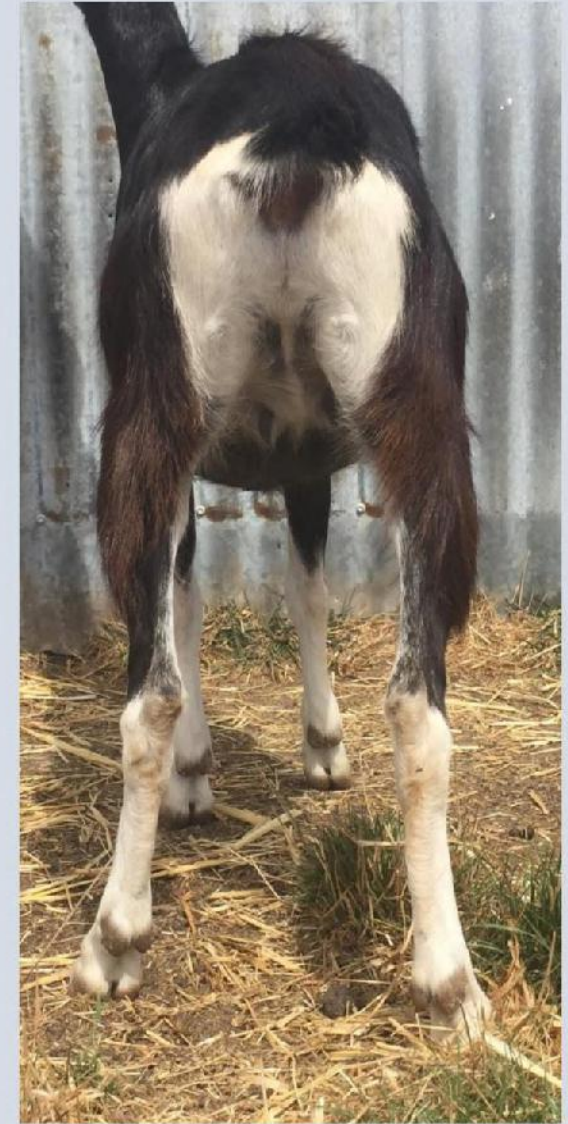
2ND

3RD

CLASS 23 LA MANCHA GOATLING EXHIBIT NO 32

DOB 22/12/19

RODEN SYRACUSE SADE



LA MANCHA GOATLING

15

Exhibit 32

A classic La Mancha head and ear placement flows through to a superb neckline. Such dairy character on display with strong shouldering and a smooth blend of shoulder and chest. Her length of body is striking and although the barrel needs maturing, from the rear we can see a bold spring of rib. The length continues over the rump and her strong upright stance really frames this doe beautifully.

RODEN SYRACUSE SADE BELINDA CARDINAL

2ND

3RD

CHAMPION DOE GOATLING

EDENDALE AGATHA

EDENDALE FARM

Exhibit 23

The visual display was impressive and the features that left an impression were numerous. This doe has a presence as a goatling that places her ready for the adult maturing with balanced dairy features.

RESERVE CHAMPION GOATLING

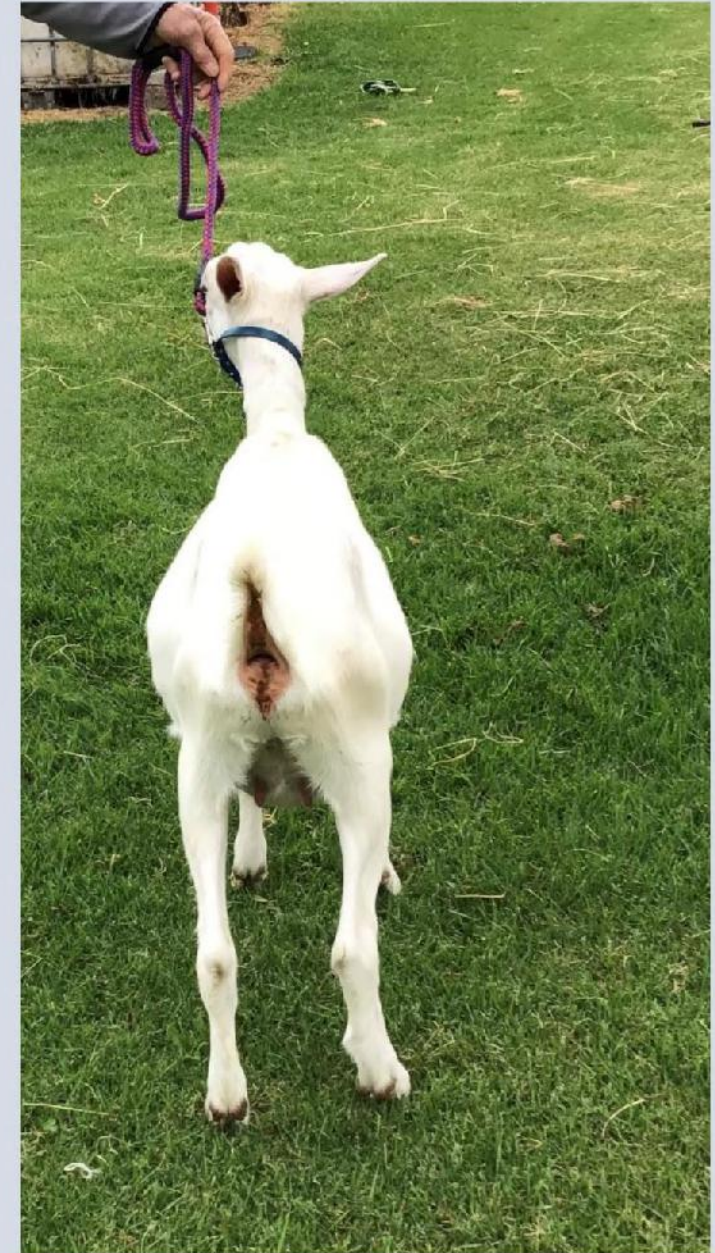
RODEN LEON KIT BELINDA CARDINAL

Exhibit 19

Its always exciting to capture a glimpse of the delicate progression toward maturing. This young doe oozes class with her leg structure, her body silhouette and the general stature.

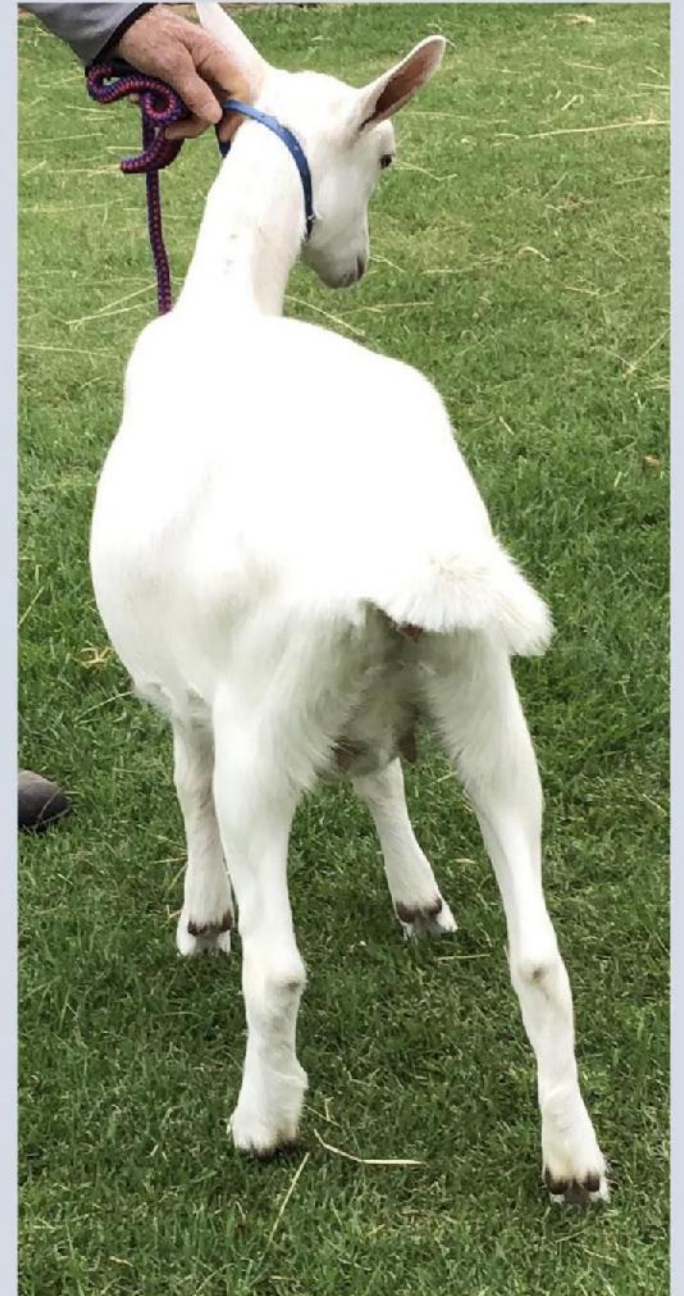
CLASS 26 SAANEN DOE KID EXHIBIT NO 33

DOB 27/9/20 SALETTE SNOWDROP



CLASS 26 SAANEN DOE KID EXHIBIT NO 34

DOB 27/9/20 SALETTE SNOWWHITE



CLASS 26 SAANEN DOE KID EXHIBIT NO 35

DOB 21/10/20

TALIA MELLIE



SAANEN DOE KID

1⁵ Exhibit 34

This young doe has lines that create a judging pleasure. The long topline easing into a gentle long rump. The clean neckline blending easily into a powerful chest. Her square through the hocks and depth of barrel give her qualities we seek in our mature stock. A beautiful Saanen demeanour.

SALETTE SNOW WHITE PAUL & JENNY BAYARD

2ND Exhibit 33

The topline through the chine and loin is straight and level. The front quarters display strength with a deep chest and forceful stance. This doe has a lovely development of the barrel and is strong and square through the hips and pin bones

SALETTE SNOW DROP PAUL & JENNY BAYARD.

3RD Exhibit 35

A striking kid with an upright stance. The balance in the rear quarters through the hock shows strength and balance. With competing against stock a month older, she is beginning to develop body strength. Although she disguises the fact by standing a little awkwardly, she looks to have length through the thurls to the pinbones.

TALIA MELLIE CHRISTINE GORMAN

CLASS 27 BRITISH ALPINE DOE KID EXHIBIT NO 38

DOB 3/12/20 TALLULAH SEREN



BA DOE KID

15

Exhibit 37

Firstly, this doe is beautifully marked with a very alert head and ear placement. The photo has the head turned and casting a shadow to the shoulders but the blending looks smooth. She displays a strong chest and a lovely square rear quarters. The rear shot gives me a strong impression of her spring of rib. A great example of the BA style.

TALLULAH SEREN BRYONY LEPOIDEVIN

2ND

3RD

CLASS 28 TOGGENBURG DOE KID EXHIBIT NO 36

DOB 27/8/20

KUDUMBA SUNDANCE



CLASS 28 TOGGENBURG DOE KID EXHIBIT NO 37

DOB 18/11/20 SKYDREAMS BERRYLIUM



TOGGENBURG DOE KID

15

Exhibit 37

The traits of length and blend are on show here and this does length over the rump is impressive. The level rump matched with a relaxed and balanced stance puts this doe in position for future udder development. Her square stance and even hocks show room for udder development to the rear. Her long body is blended beautifully through the neck and shoulder. An impressive toggenburg.

SKYDREAMS BERRYLIUM CARRIE FLORENCE

2ND

Exhibit 36

Once again we see the length of topline moving to the rump in a consistent line. The upright stance lacks curvature of the stifle but is square and straight through the hock. A long neckline, she has many assets to move through to maturity.

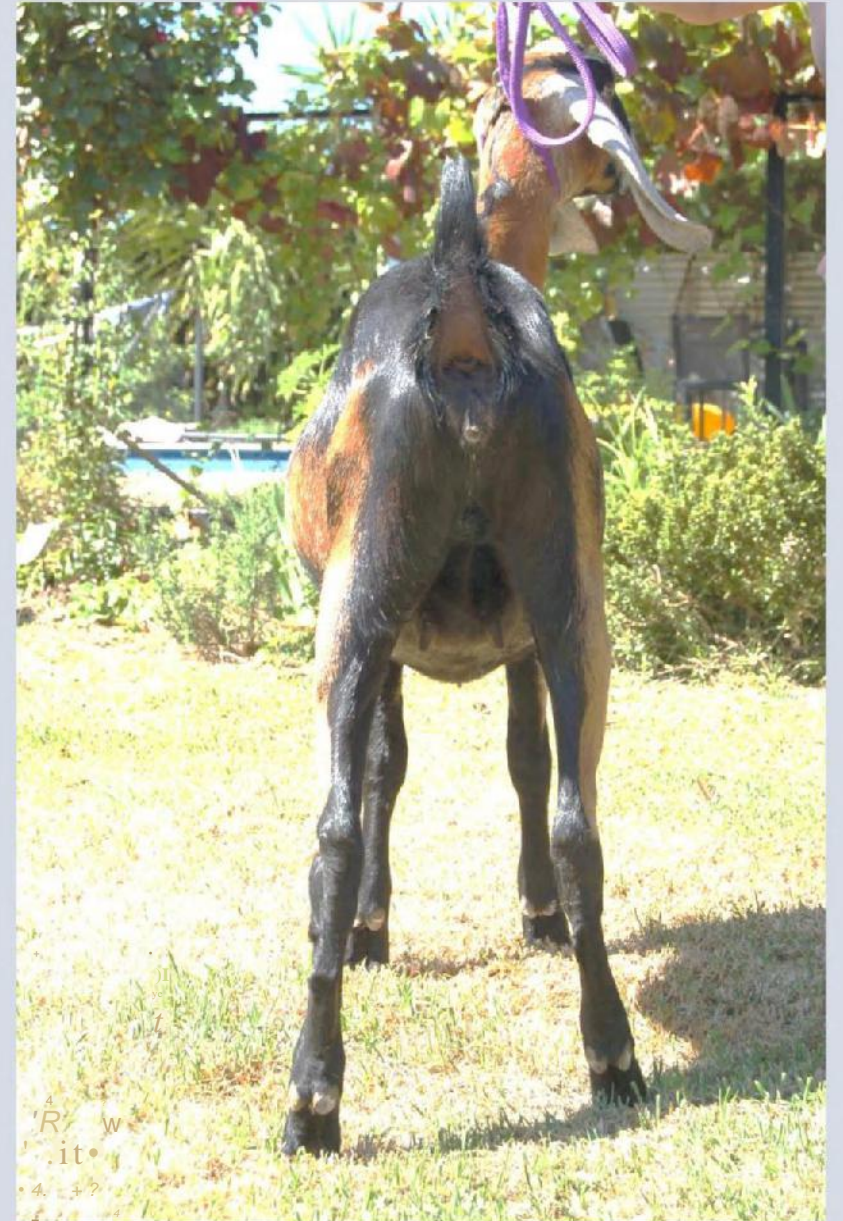
KUDUMBA SUNDANCE CARRIE FLORENCE

3RD

CLASS 29 AN DOE KID EXHIBIT NO 39

DOB 7/7/20

ANAMA ARWEN



CLASS 29 AN DOE KID EXHIBIT NO 40

DOB 1/8/20 IMINAMUCK DIVINE



CLASS 29 AN DOE KID EXHIBIT NO 41

DOB 31/7/20 IMINAMUCK DAPHNE



ANGLO NUBIAN DOE KID

1ST

Exhibit 39

A graceful doe with a long torso and deep barrel. The depth of chest is impressive with beautiful shouldering. The ear and head carriage is clean and displays strong nubian traits. I particularly like the set of the rear carriage where she stands erect and balanced. From the rear we note the spring of rib and neat square hocks. Her pasterns are extremely strong and straight.

ANAMA ARWEN BRYONY LEPOIDEVIN

2ND

Exhibit 40

A stunning head with beautifully set ear carriage, this doe is very photogenic. I really like the square rear stance and once again the strong straight pasterns. Her long body has a rise to the rump in classic nubian style and we see the beginnings of barrel development. Quite an eye-catching doe.

IMINAMUCK DIVINE JEMIMAH VAN GEFFEL

3RD

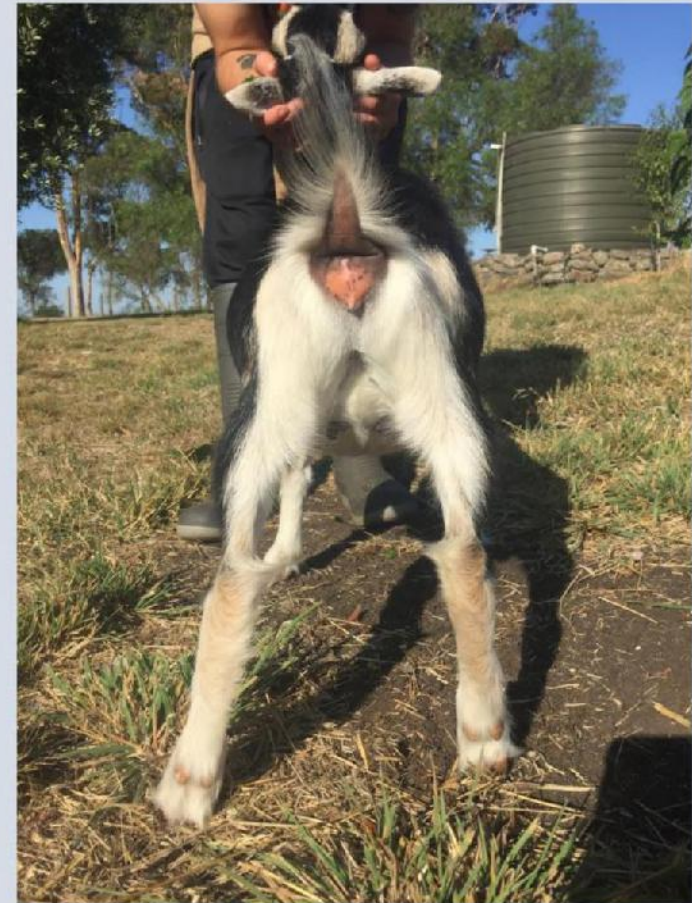
Exhibit 41

Great head and ear placement this doe displays a long neat neckline. She displays a developing barrel and impressive chest depth. Her stance lacks the balance I seek but once again, another photograph may have captured her in a more natural stance.

IMINAMUCK DAPHNE JEMIMAH VAN GEFFEL

CLASS 32 NIGERIAN DOE KID EXHIBIT NO 42

DOB 14/8/20 FIRST FLEET COOKIE



NIGERIAN DOE KID

15

Exhibit 42

Nigerian dwarves are the miniature equivalent of Dairy Goats and the similarities are on show here. This doe has the characteristic long neckline blending to a smooth shoulder with prominent withers. She has a smooth flow through the chine and loin to a well balanced rump. The rear stance is square and straight and a positive spring of rib is displayed. The dairy type is obvious and this doe presents a great standard for the Nigerian Dwarves in the Society. (Note: I produced a breed standard for Nigerian Dwarves for one of the Miniature groups

FIRST FLEET COOKIE BELINDA CARDINAL

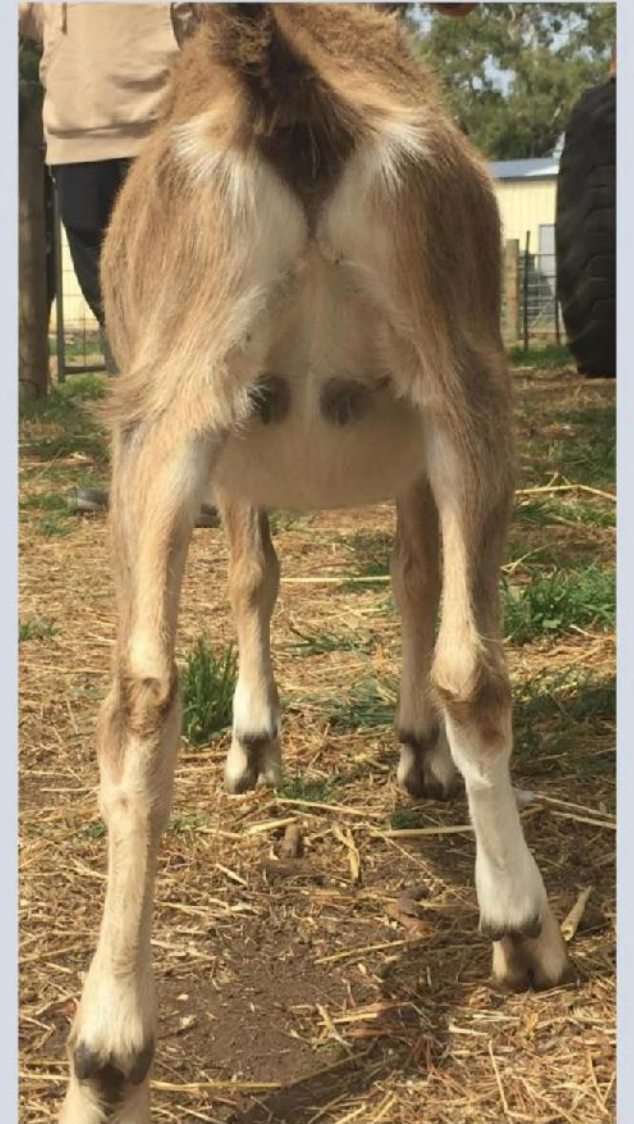
2ND

3RD

CLASS 33 LA MANCHA DOE KID EXHIBIT NO 43

DOB 14/8/20

RODEN AVATAR ROBYN



LA MANCHA DOE KID

15

Exhibit 43

Although a breed-hat hasn't had the breed history here in Australia, this doe is a delight. She has an outstanding muzzle, her ear setting is all La Mancha, but the blend through the body continues to flow. A long tubular neckline blends beautifully to a smooth shouldering. She displays a depth of chest and a developing barrel. From the rear she has a broad stance. Her straight and level topline has a small rise to the wither. She is a truly wonderful breed style to move this breed into the dairy goat breed lines.

2ND

RODEN AVATAR ROBYN BELINDA CARDINAL

3RD

CHAMPION DOE KID

Exhibit 39

A delightful doe with lots of positives. She shone in this class
ANAMA ARWEN BRYONY LEPOIDEVIN.

RESERVE CHAMPION DOE KID

Exhibit 37

Shows great Dairy type, with length and balanced topline.
SKYDREAMS BERRYLIUM CARRIE FLORENCE

For those that need to know, the reserve was battled between the Toggenburg and the La Mancha with the superior rump length winning out. The La Mancha however was a surprise packet and will be one to watch as she develops.