

MILKING CLASSES

JUDGE: MURRAY GRILLS

CLASS 1 SAANEN DOE IN MILK EXHIBIT 1

DOB 22./10/19

KIDDED 14/11/20 SALETTE INFINITY

LACTATION 1ST



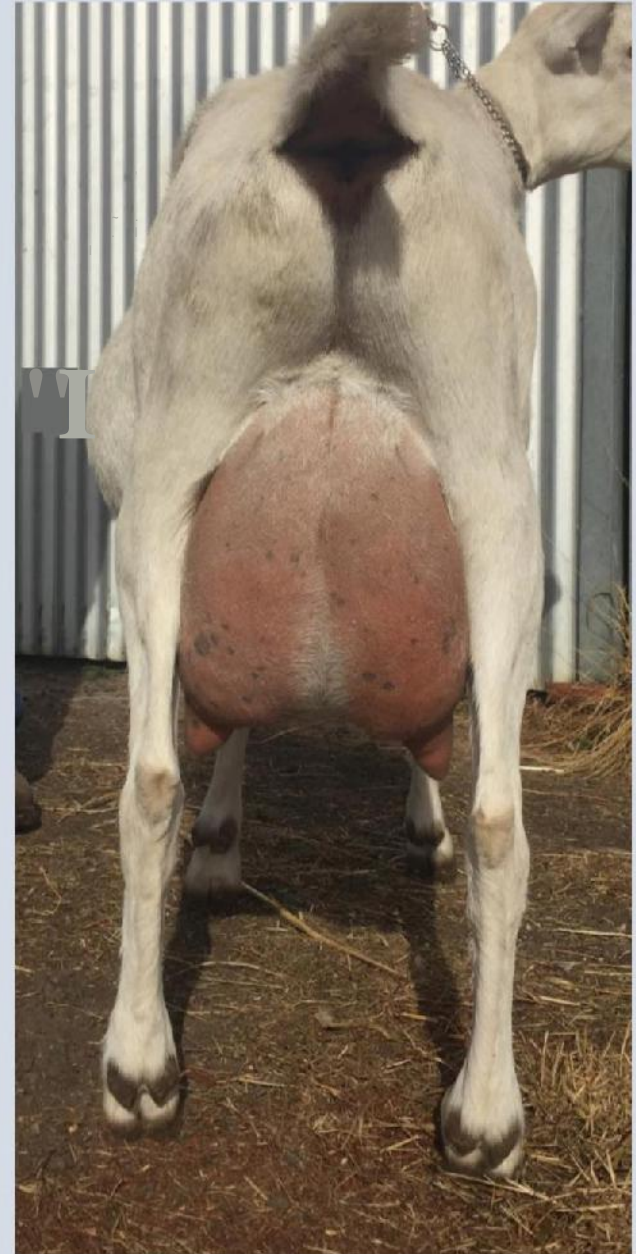
CLASS 1 SAANEN DOE IN MILK EXHIBIT 2

DOB 20/9/17

KIDDED 13/10/20

TARLEENA LADY LORETTA

LACTATION 2ND



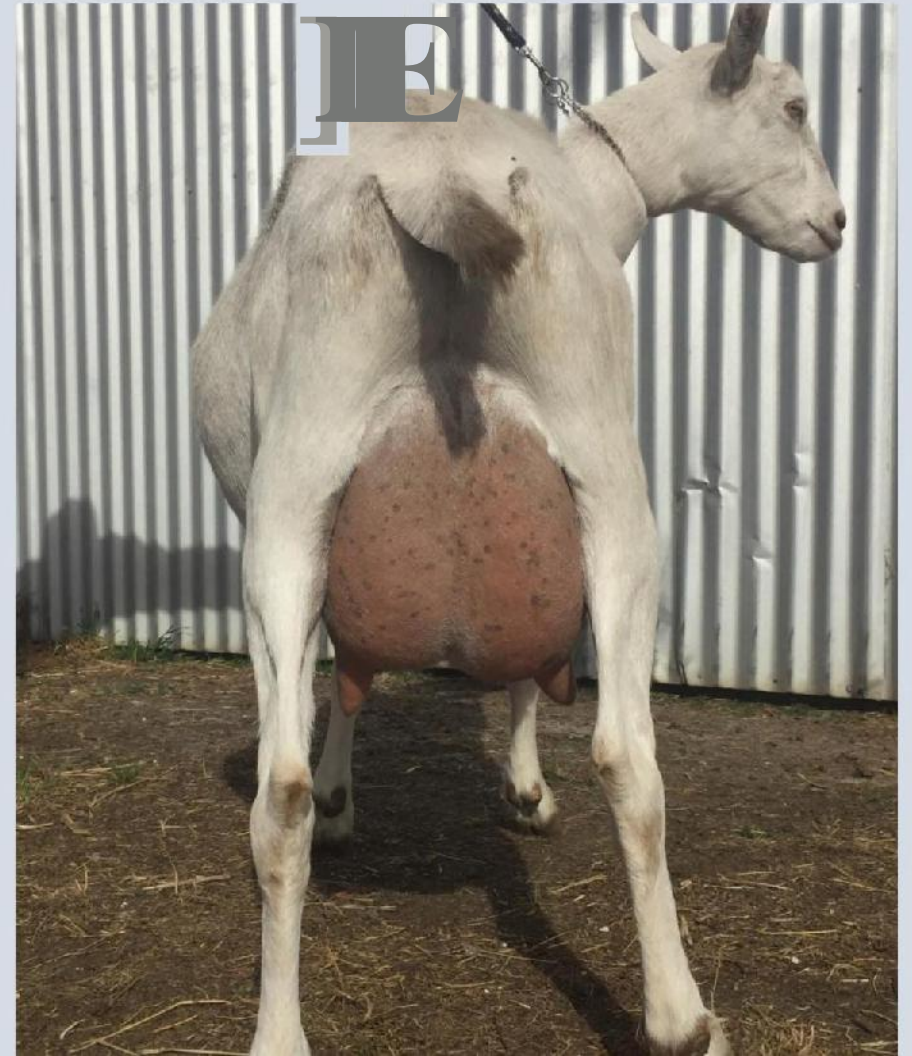
CLASS 1 SAANEN DOE IN MILK EXHIBIT 3

DOB 20/9/17

KIDDED 11/10/20

TARLEENA LADY LAURELLE

LACTATION 2ND

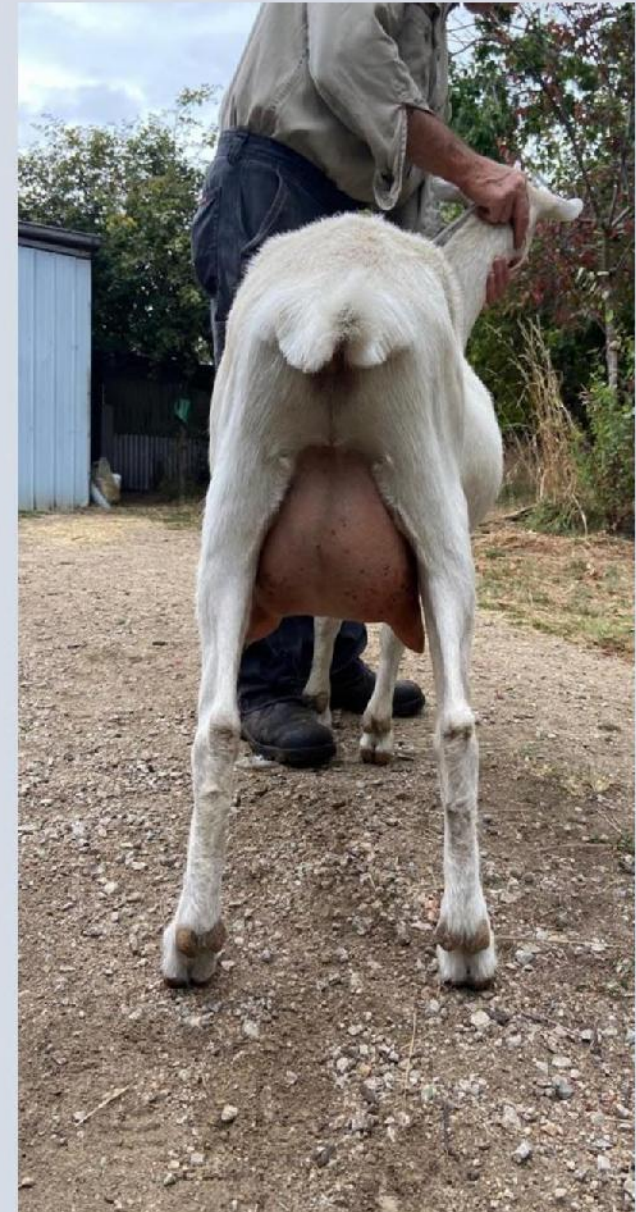


CLASS 1 SAANEN DOE IN MILK EXHIBIT 4

DOB 7/10/14

KIDDED 14/10/20 TALIA REENA

LACTATION 1ST



SAANEN DOE

1st

Exhibit 2

This doe is a wonderful Dairy Goat. Her level topline runs to a level long rump, setting a great position for the udder to have a broader area of attachment. The prominent wither and deep chest give way to an even deeper barrel that displays well developed milk veins meeting a beautifully shaped and attached udder with a strong medial ligament. Her blend through the shoulder and through the thurls to the escutcheon, this doe is crafted, alluring and complete. A true Dairy Doe.

TARLEENA LADY LORETTA BELINDA CARDINAL

2ND

Exhibit 3

The strength of topline is on display here once again. The height of the wither is balanced by the depth of the chest. Her strong stance is highlighted in the rear with square hocks and great length of rump. With exceptional spring of ribs and a beautifully deep barrel this doe also displays the areas of attachment in the udder being high and broad. A strong contender to her first place rival.

TARLEENA LADY LAURELLE BELINDA CARDINAL

3RD

Exhibit 1

As you will appreciate, length is an important factor in my judging. It allows the doe to function efficiently, even during kidding times where the kids crap the abdomen space. This doe displays that quality of length beautifully, continuing the length through the rump allowing for a long and broad attachment. Her udder shows strong and extended attachment. One of her alluring qualities is the lovely long neckline that meets with a powerful forequarter.

SALETTE INFINITY PAUL & JENNY BAYARD

4TH

Exhibit 4

An older doe when first kidded, this girl is not out of place here. The length over the rump is showing the strong attachment of a blossoming udder. A strong and upright stance with a powerful chest. The development through the barrel is impressive showing good spring of rib and great development of depth.

TALIA REENA CHRISTINE GORMAN

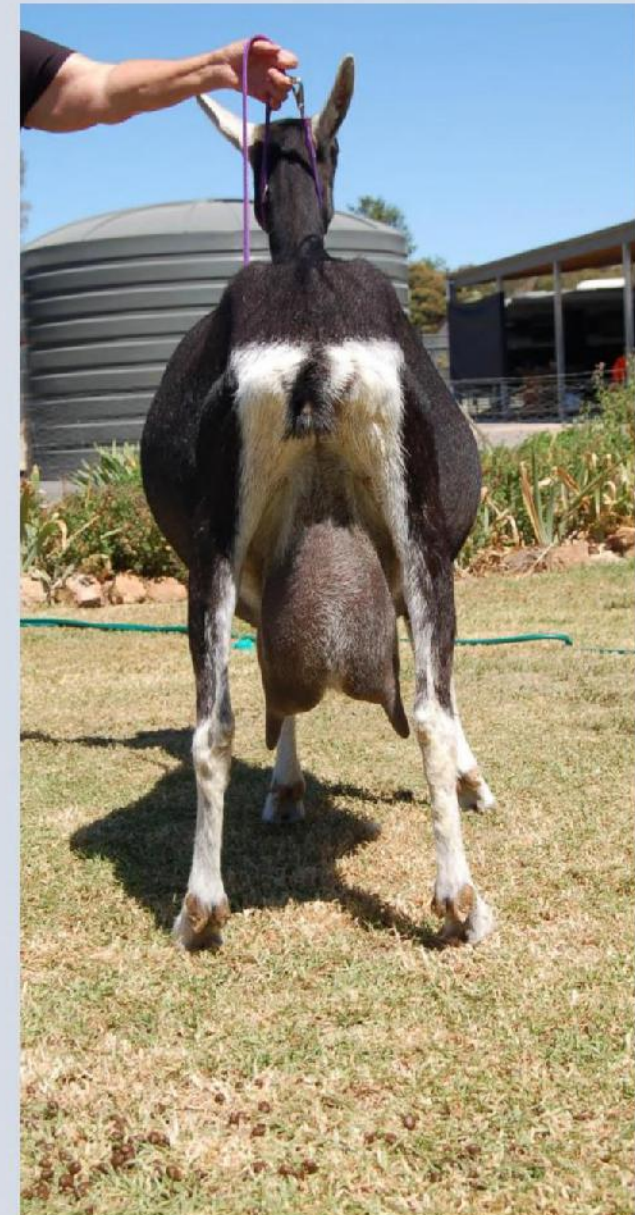
I know this is not necessarily the forum but as a judge it's such a pleasure to judge goats with full udders. Recently the trend has been to milk all goats out and then judge the classes, but this distorts the view of the essential nature of the dairy goat, that being a milk producer. On milk out the body relaxes and we get distorted visions of our dairy stock. The ability to carry and perform in full milk allows a judge to view that quintessential element of the calling of a Dairy Goat. And at shows we get to 'show off this element to the public.

CLASS 2 BRITISH ALPINE DOE IN MILK EXHIBIT 5

DOB 14/8/11

KIDDED 3/12/20 A CH TALLULAH BELLA

LACTATION 6TH



BA DOE

1st

Exhibit 5

How exciting to judge a 6th lactation doe and to see such continuing qualities of dairiness have been carried through. Her chest and withers are classic and display strength and character. Her torso is beautifully sprung with great length and a magnificent barrel. Although the udder is not displaying the production of youth, the rear photo gives us the impression of where the udder over many lactations swelled to fill the broad escutcheon. This doe is a picture of dairy character and sustained milking prowess. Her udder still displays great forward attachment and the tortuous milk veins giving a hint of the enormous amount of milk produced by this doe. Her face tells me more, she has a calm and engaging stare that shows her patience and endurance as well as a strength that held her in the alpha group of the herd. Thank you for sharing.

2ND

ACHTALLULAH BELLA BRYONY LEPOIDEVIN

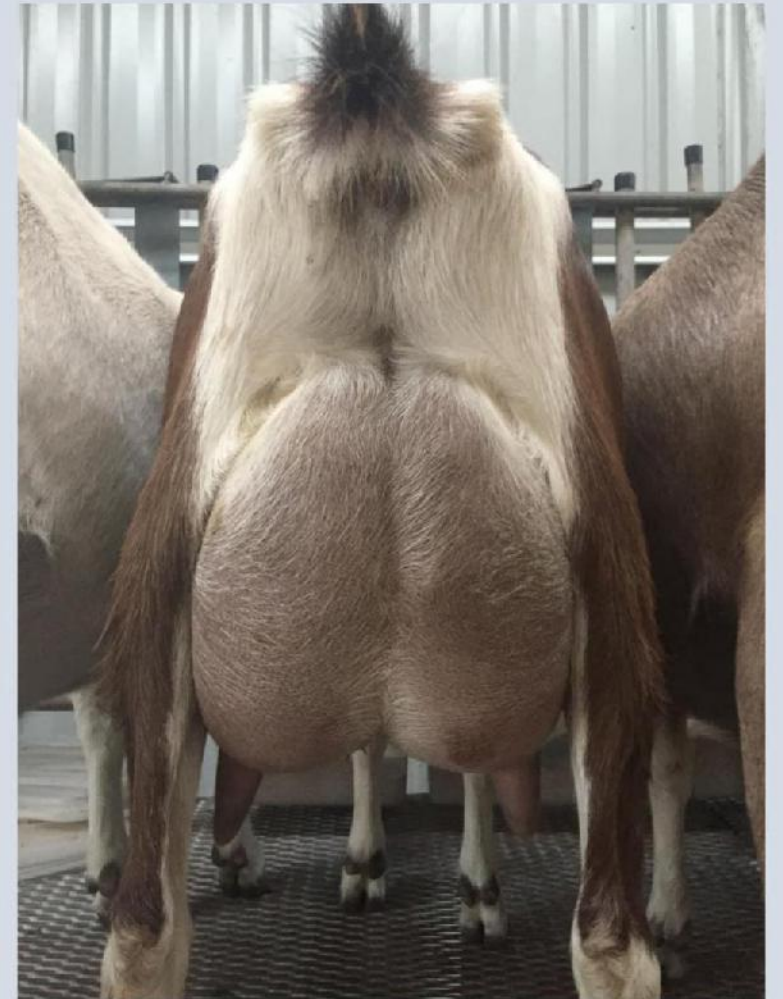
3RD

CLASS 3 TOGGENBURG DOE IN MILK EXHIBIT 6

DOB 14/9/18

KIDDED 16/11/20 RODEN CACHE VERONA

LACTATION 1ST

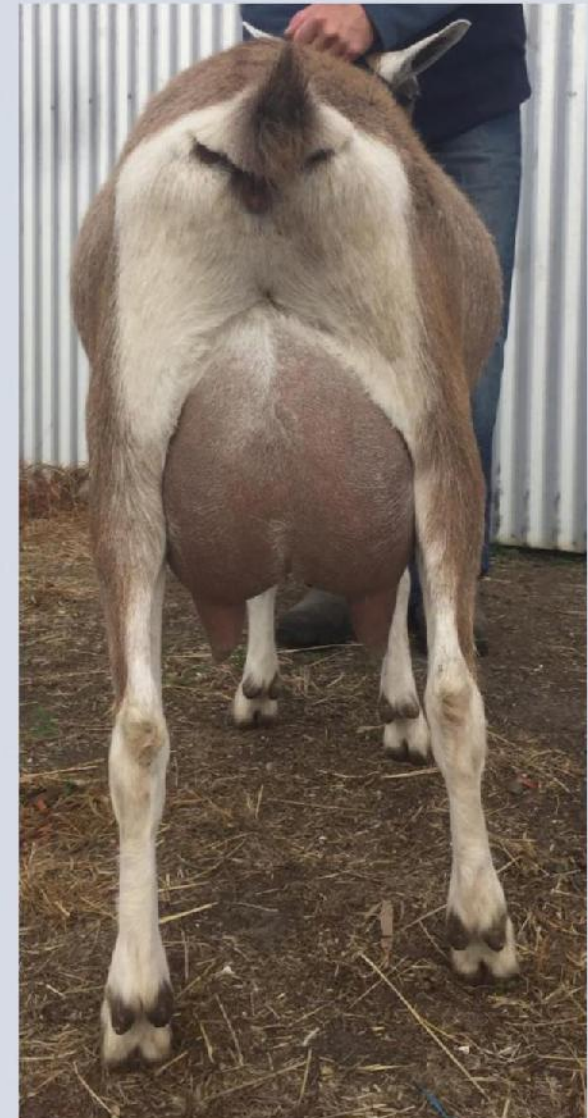


CLASS 3 TOGGENBURG DOE IN MILK EXHIBIT 7

DOB 14/9/18

KIDDED 1/9/20 RODEN CACHE CHEYENNE

LACTATION 2ND



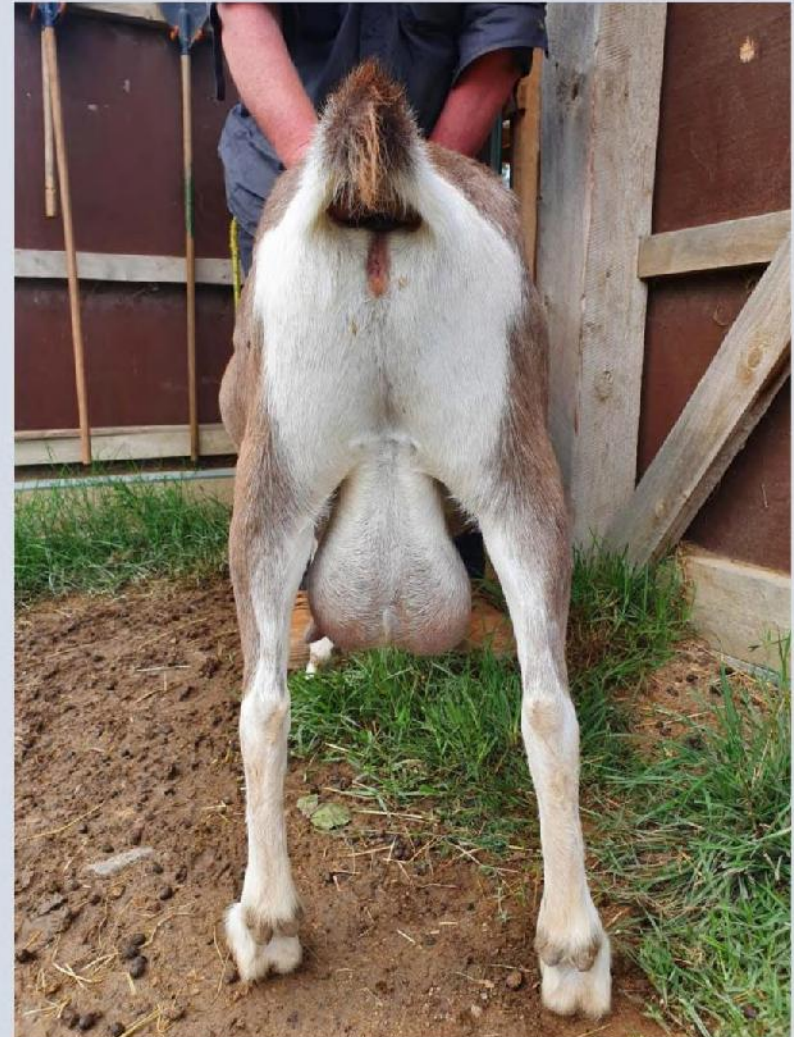
CLASS 3 TOGGENBURG DOE IN MILK EXHIBIT 8

DOB 10/9/16

KIDDED 30/9/19

EDENDALE ARCADIA

LACTATION 1ST



CLASS 3 TOGGENBURG DOE IN MILK EXHIBIT 9

DOB 16/10/13

KIDDED 11/8/20

KUDUMBA MALKIJAH

LACTATION 5TH



TOGGENBURG DOE

1st

Exhibit 6

First Lactation, the future is assured with this doe. Lets look at her in sequence. A powerful muzzle with erect ear set leads to a long neckline. The blend to the shoulder is smooth and muscular. The chest is deep and broad and we get a glimpse of a prominent wither. She displays a strong topline which runs into a level and long rump. The barrel is deep and well sprung with great depth for her age. Then the udder, such a high and broad attachment to the rear is stunning, the medial ligament is strong and supports the large udder beautifully, the teat placement is perfect. And true to that long rump, the udder attaches well forward in a smooth meeting with the barrel. This young doe has a charismatic and engaging style. Dairiness exemplified.

RODEN CACHE VERONA BELINDA CARDINAL

2ND

Exhibit 7

This doe has a beautiful topline. Long strong and the blend over the rump is superb. The length of the body and rump are impressive. A very strong muzzle combined with a long neckline frame this doe, the elegance coming from the length and blend exhibited in the udder, where the attachment is high and broad, the teats placed beautifully and the forward attachment seems to be inching further forward to the barrel. A beautiful doe.

RODEN CACHE CHEYENNE

3RD

Exhibit 9

This doe displays a strong head and muzzle, the neck and shoulder are strong and blended. Once again we can view the body displaying length and blending into a level long rump. The attachment of udder is strong and high with great forward attachment. The strength of stance displays her ability to handle the milk production. Such a youthful and energetic doe for 5 lactations.

KUDUMBA MALKIJAH CARRIE FLORENCE

4TH

Exhibit 8

A young doe, she is beginning to develop into production. Her body shows good length with a strong topline. For a young doe, the docile impression in that powerful broad head is impressive. A strong stance over the rump.

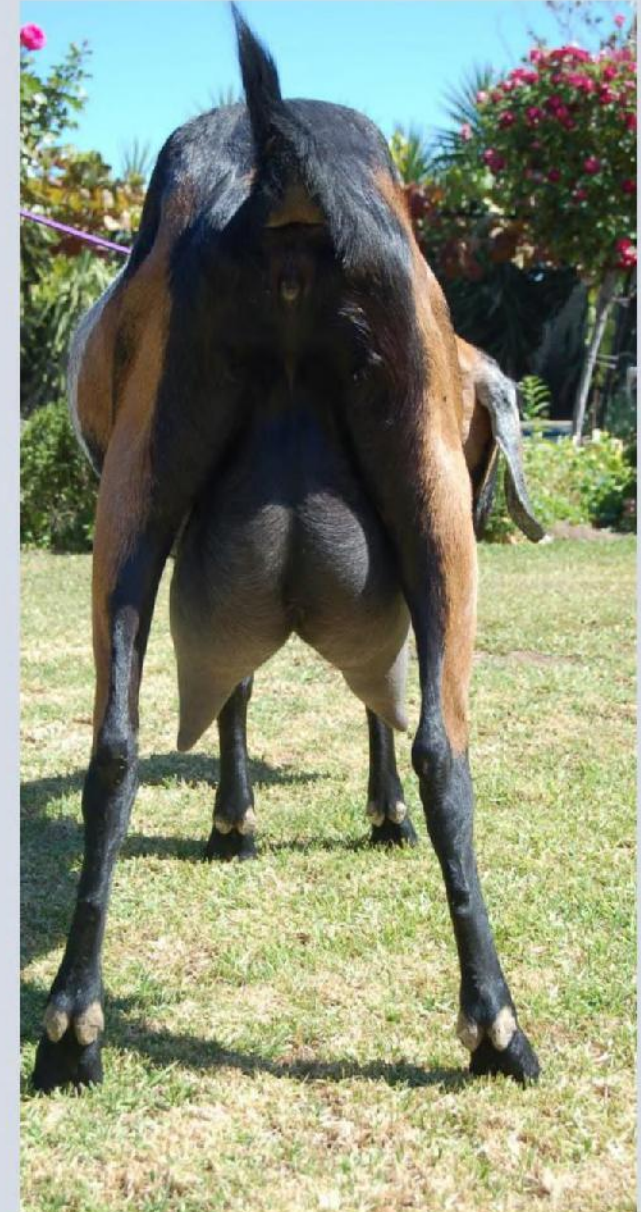
EDENDALE ARCADIA EDENDALE FARM

CLASS 4 ANGLO NUBIAN DOE IN MILK EXHIBIT 10

DOB 14/9/17

KIDDED 7/7/20 DOWN UDDER AMAIA

LACTATION 2ND

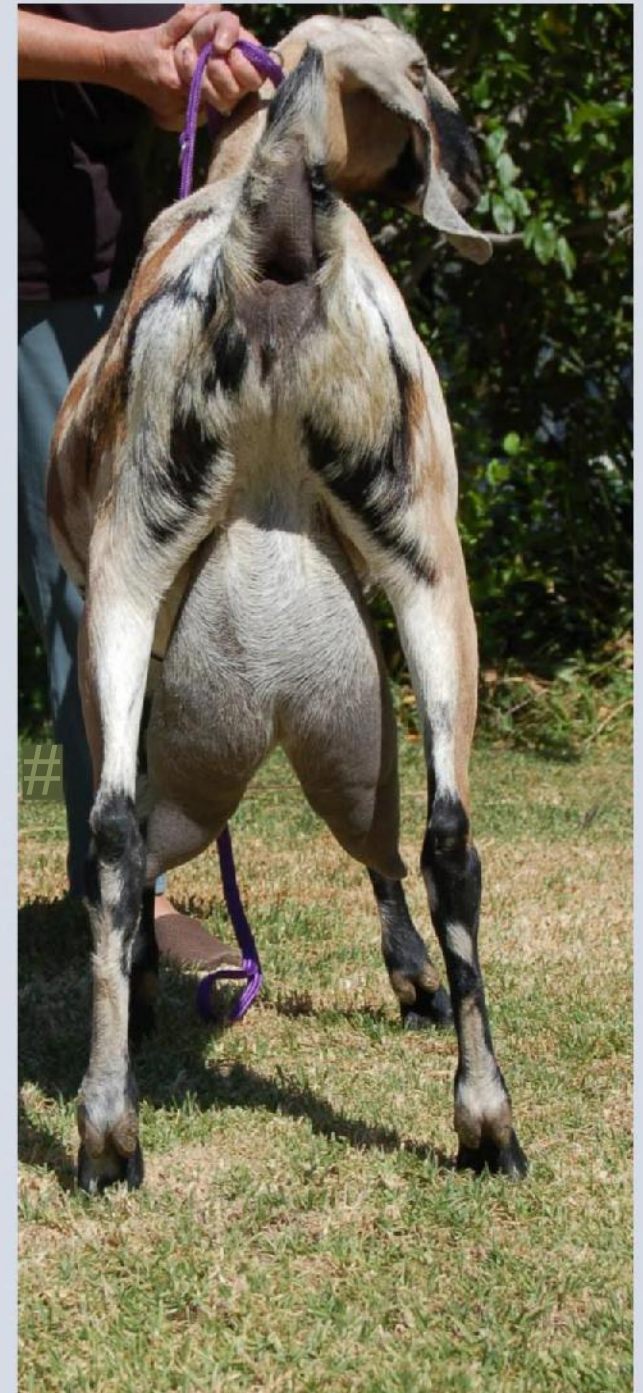


CLASS 4 ANGLO NUBIAN DOE IN MILK EXHIBIT 11

DOB 10/7/17

KIDDED 7/7/20 ANAMA SAPPHIRE

LACTATION 2ND

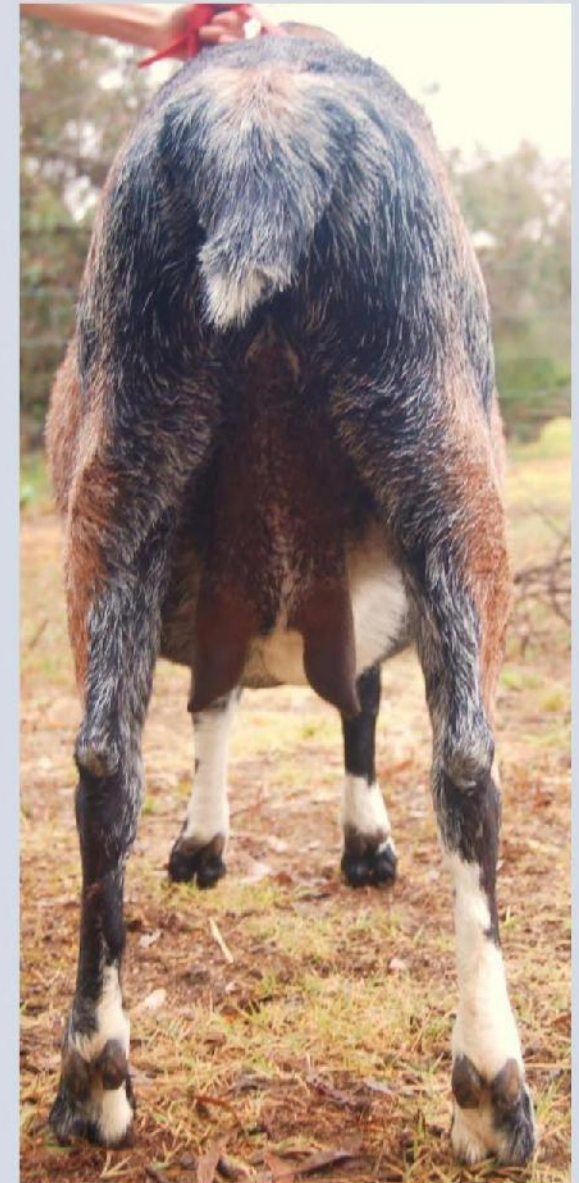


CLASS 4 ANGLO NUBIAN DOE IN MILK EXHIBIT 12

DOB 28/9/14

KIDDED JUNE 19 KILLARA RAM AISHA

Lact 3rd RUNNING THROUGH



CLASS 4 ANGLO NUBIAN DOE IN MILK EXHIBIT 13

DOB 13/8/18

KIDDED 14/8/20 IMINAMUCK BELLENTINE

LACTATION 1ST

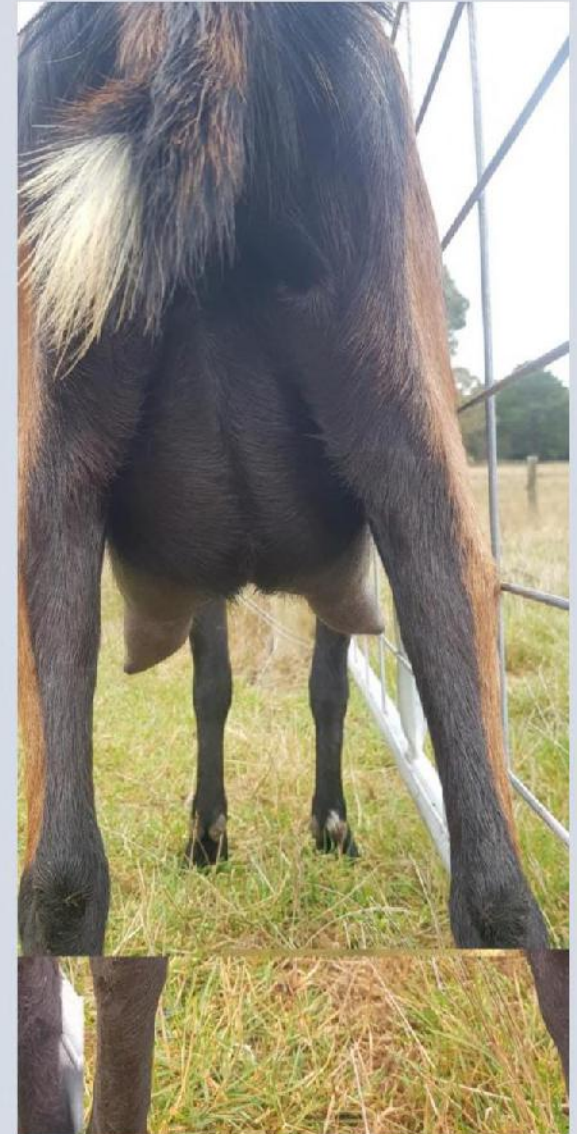


CLASS 4 ANGLO NUBIAN DOE IN MILK EXHIBIT 14

DOB 4/6/19

KIDDED 8/12/20 IMINAMUCK CELESTE

LACTATION 1ST



CLASS 4 ANGLO NUBIAN DOE IN MILK EXHIBIT 15

DOB 16/11/15

KIDDED 27/9/20 SKYDREAMS VENTURA

LACTATION 3RD



AN DOE

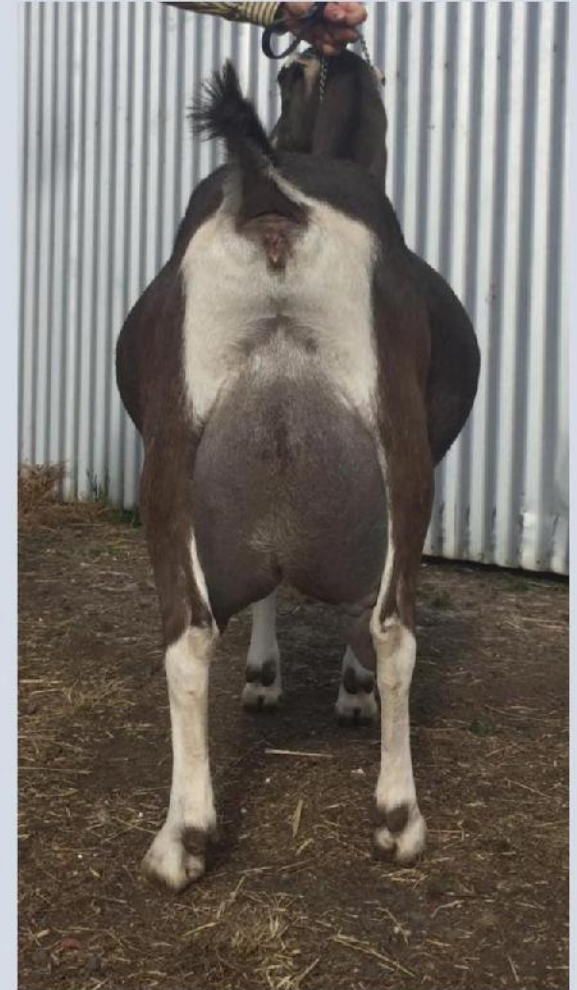
1st	Exhibit 10	<p>Such an elegant doe, her stature is upright and pronounced. With a blend of neckline and beautiful shouldering, we once again see the value of a prominent wither. A strong backline that rises to the thurl is set off by the level long rump that supports her udder. Great depth to the barrel and a broadly attached udder, this doe has a dairiness that is enchanting.</p> <p>DOWN UDDER AMAIA BRYONY LEPOIDEVIN</p>
2ND	Exhibit 11	<p>Length is all I see in this photo. A powerful head with a long tubular neckline, the blend to the shoulder is superb. The height of the wither is exceptional but the long and well developed torso behind this is eyecatching. Great depth where needed and rump long and level supporting a well attached udder.</p> <p>ANAMA SAPPHIRE BRYONY LEPOIDEVIN</p>
3RD	Exhibit 15	<p>Lovely large framed doe with an elegant stance. Her withers and shoulders are beautifully blended and she possesses a great depth to the barrel. The topline rises to the thurls and with a short sweep through the rump. The udder displays a good forward attachment and well placed teats.</p> <p>SKYDREAMS VENTURA CARRIE FLORANCE</p>
4th	Exhibit 13	<p>A graceful doe with a long and level topline. Her assets are the distinctive neckline and high blended wither. The udder displays solid attachment which generates from the rump.</p> <p>IMINAMUCK BELLENTINE JEMIMAH VAN GEFFEL</p>
5th	Exhibit 14	<p>Great potential shown here in this young doe. I love the head carriage (for exhibitors this alert stance does capture a judge's eye). She shows characteristics of body length and a burgeoning udder.</p> <p>IMINAMUCK CELESTE JEMIMAH VAN GEFFEL</p>
6th	Exhibit 12	<p>Although this doe has some superb qualities, as a judge I will be attributing points to udder development (we place 33.3% on udders). As this doe is on the run through and is reaching the dry stage, I can only judge on 66.7%. Having said that I was so pleased to see such a great stature. Her long, deep barrel, deep chest and exquisite level rump leave me gasping for more of this doe. She displays strength, length and a rear stance that is copy book. Added to that is a head and neckline that oozes Nubian class. She heaped up a huge amount of that 66.7% allotted to her and for us all, would like to see her in this competition in milk on the next round of virtual shows.</p> <p>KILLARA RAM AISHA DEB PORTER</p>

CLASS 8 LA MANCHA DOE IN MILK EXHIBIT 16

DOB 14/12/16

KIDDED 16/11/20 RODEN TT SELINA

LACTATION 2ND

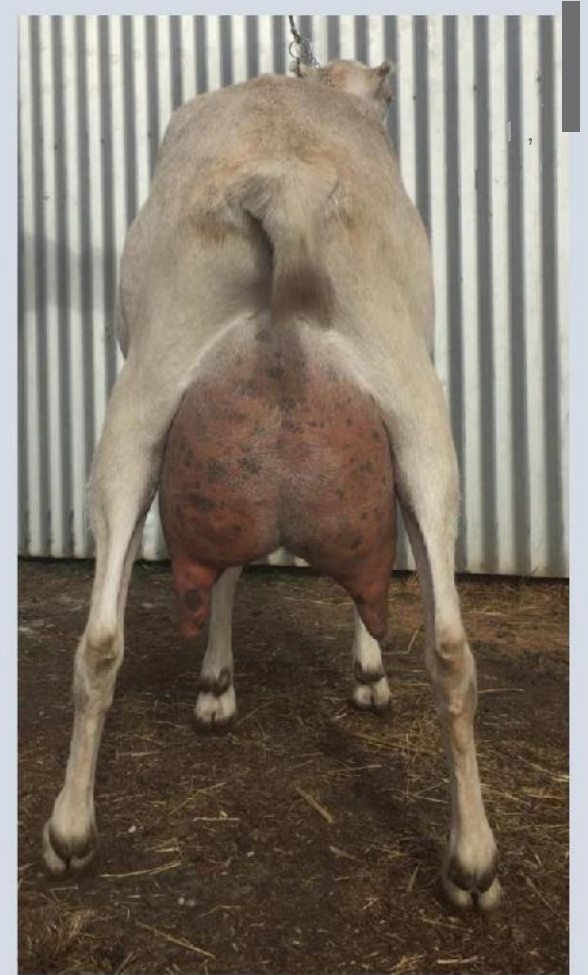


CLASS 8 LA MANCHA DOE IN MILK EXHIBIT 17

DOB 9/12/17

KIDDED 11/10/20 RODEN MALIBU

LACTATION 1ST



LA MANCHA DOE

1st Exhibit 16

This doe has a powerful frame. Strength through the muzzle and neck is reflected in powerful shoulders and a deep chest. Her high withers allow the smooth transition to a well sprung and deep barrel. An impressive topline blends to a level rump. This doe carries her large udder with a confidence in her rear stance. The udder is attached high and wide at the rear with a strong medial ligament supporting the base of the udder. An attachment that is well forward to the barrel the teats are well placed. There is much to like about this doe and her confidence, strength and dairy character are vibrant features.

RODEN TT SELINA BELINDA CARDINAL

2ND Exhibit 17

The dairy character of both these does is infectious. This doe has a stunning rear attachment with ideal teat placement. The evenness of the udder is a great attribute and the development of the barrel along with the strong level topline are all admirable features. It is interesting that the strength we see in a forequarter is usually matched with a high wither as this doe possesses. Impressive first kidder.

RODEN MALIBU BELINDA CARDINAL

3RD

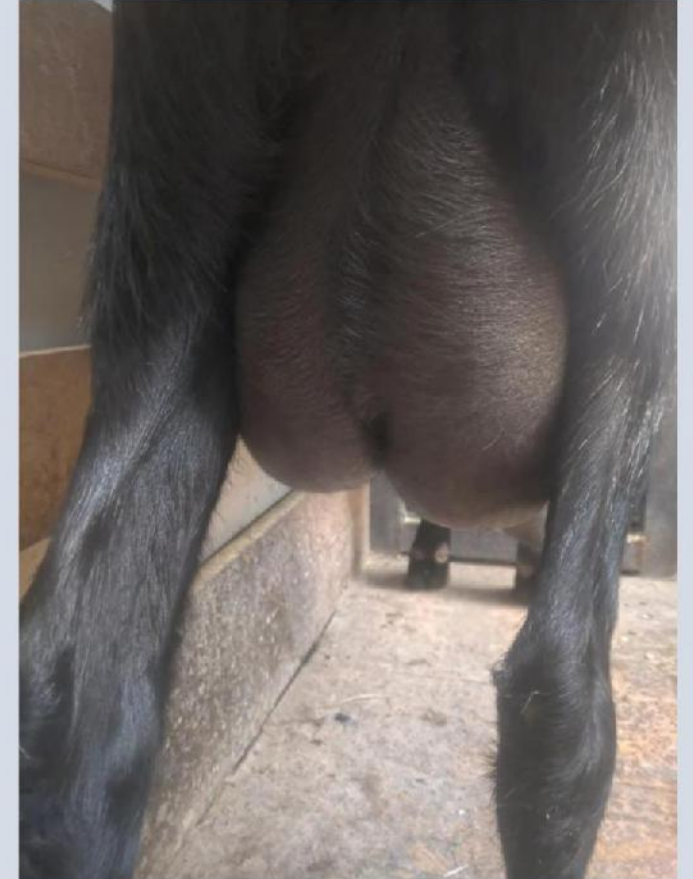
CLASS 9 ALPINE DOE IN MILK EXHIBIT 18

DOB 16/8/16

KIDDED 9/18

CAROLANN PLAYGIRL

LACTATION 1 st RUNNING THROUGH



ALPINE DOE

1st

Exhibit 18

I'd love to see this doe in the flesh and to allow her to really show off. I can see the length of torso and a developing barrel. She provides us with a glimpse of a long and level rump. As she is running through the udder varies from a freshened udder but still shows the character of bred attachment, evenness and a strong medial ligament. Great potential.

CAROLANN PLAYGIRL

2ND

3RD

CLASS 1ST LACTATION BEST VESSELL EXHIBIT 1

DOB 22/10/19 SALETTE INFINITY

KIDDED 14/11/20

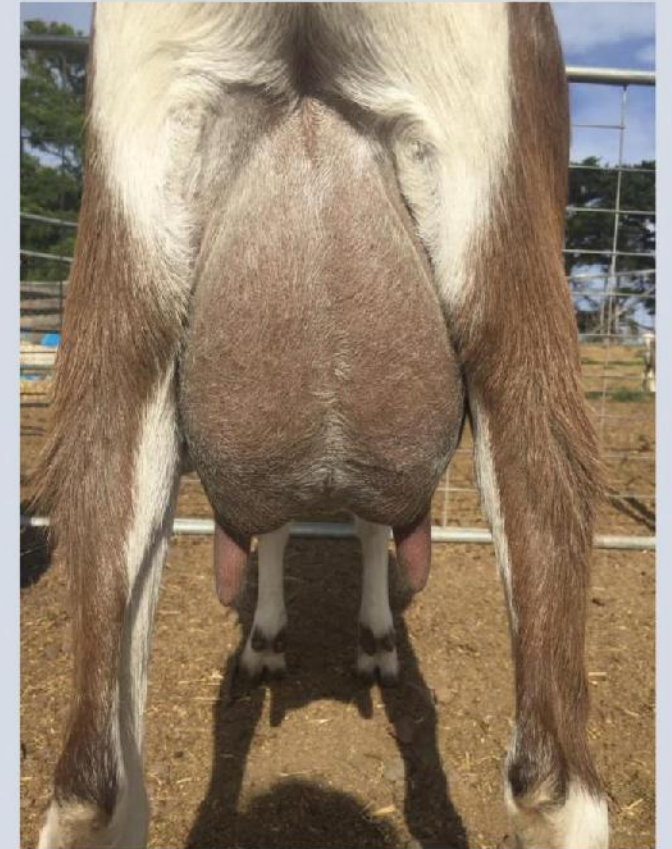


CLASS 1ST LACTATION BEST VESSELL EXHIBIT 6

DOB 14/9/18

KIDDED 16/11/20 RODEN CACHE VERONA

LACTATION 1ST

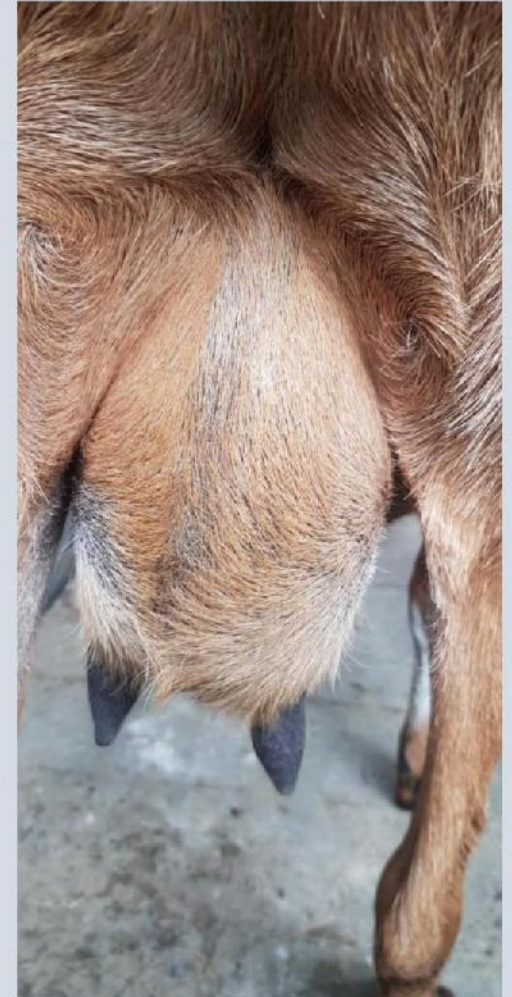


CLASS 1ST LACTATION BEST UDDER EXHIBIT 13

DOB 13/8/18

IMINAMUCK BELLENTINE

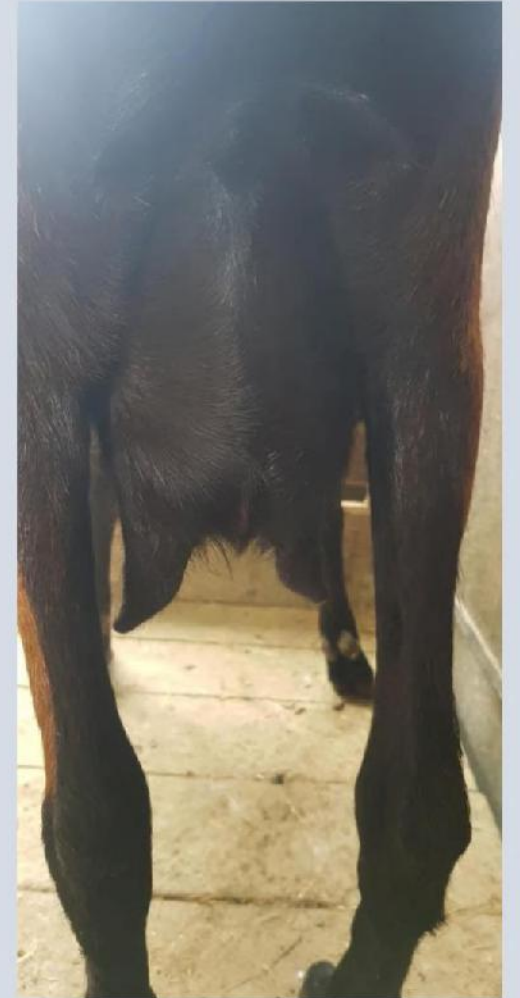
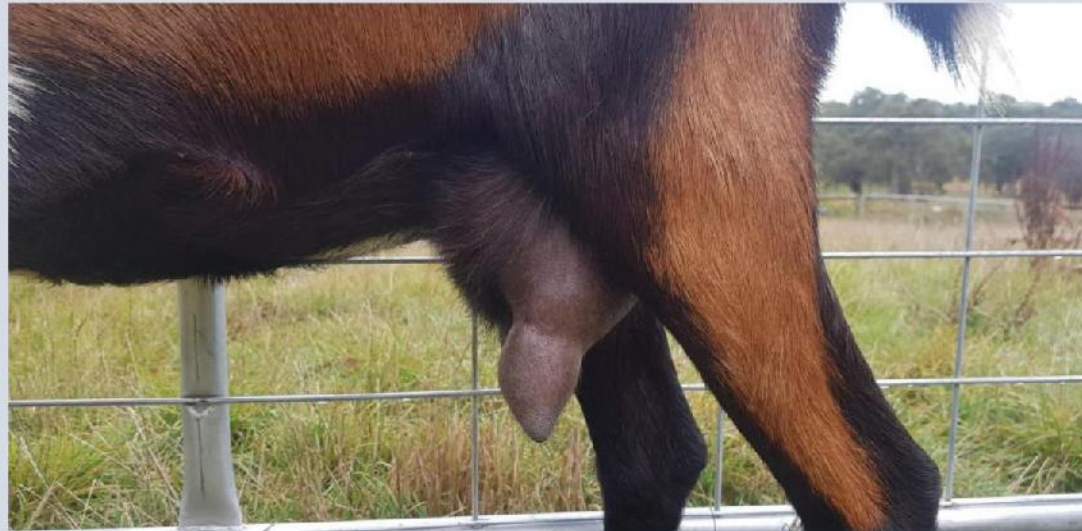
KIDDED 14/8/20



CLASS 1ST LACTATION BEST UDDER EXHIBIT 14

DOB 4/6/19 IMINAMUCK CELESTE

KIDDED 8/12/20

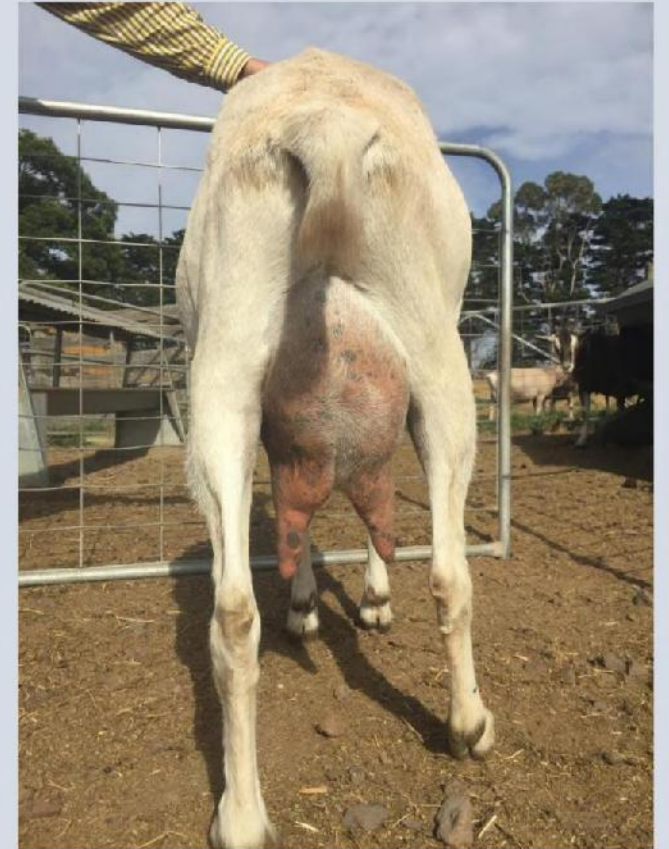
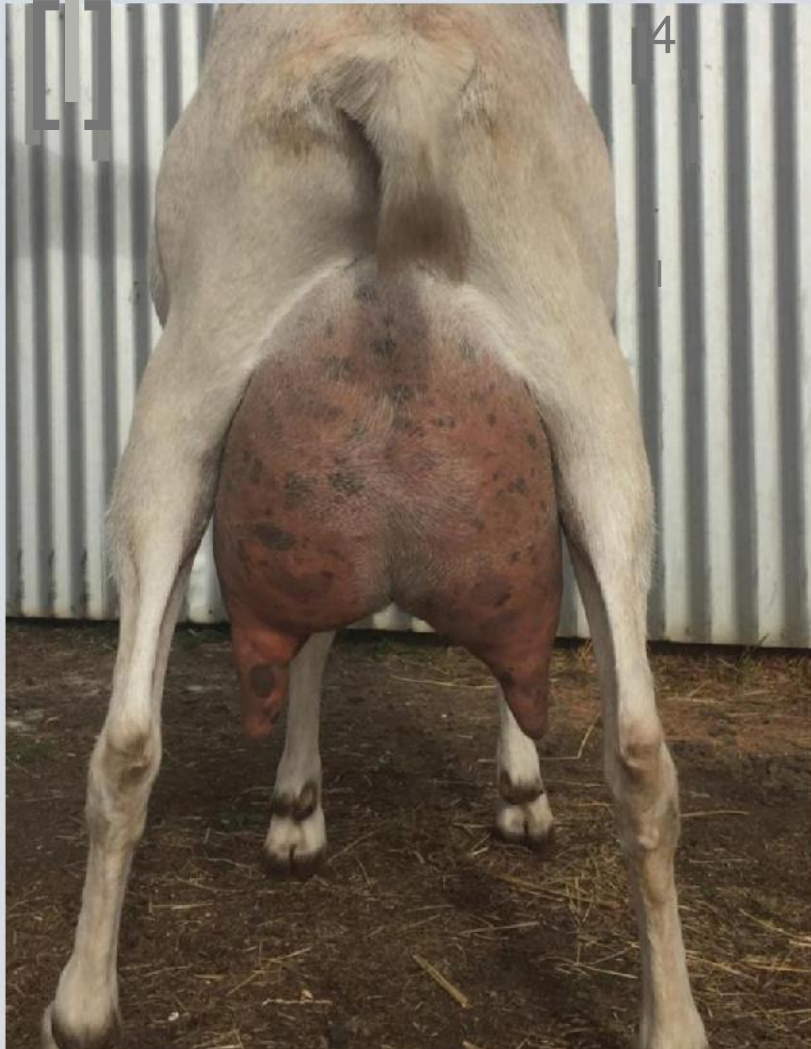


CLASS 1 ST LACTATION BEST UDDER EXHIBIT 17

DOB 9/12/17

RODEN MALIBU

KIDDED 11/10/20



1ST LACTATION | BEST UDDER

- | | | |
|-----------------|------------|---|
| 1 st | Exhibit 6 | Exceptional capacity a beautifully balanced udder that attached high and wide to the rear and strongly attached forward
RODEN CACHE VERONA BELINDA CARDINAL. |
| 2 ND | Exhibit 17 | A beautifully balanced udder with great capacity. A high wide rear attachment with strong medial ligament. Milk out was a great feature and a strong forward attachment.
RODEN MALIBU BELINDA CARDINAL |
| 3 RD | Exhibit 1 | Shape and evenness was a feature, a broad and well attached rear udder that also attached well to the front. Milk out was impressive.
SALETTE INFINITY PAUL&JENNY BAYARD |

1st Lactation

Exhibit 6 Roden Cache Verona Belinda Cardinal

2nd Lactation

Exhibit 17

Roden Malibu Belinda Cardinal

3rd Lactation

Exhibit 1

Salette Infinity

Paul & Jenny Bayard

1st Lactation

Exhibit 6

2nd Lactation

Exhibit 17

3rd Lactation

Exhibit 1

Exhibitor and the exhibitor's name should be included on the exhibit card

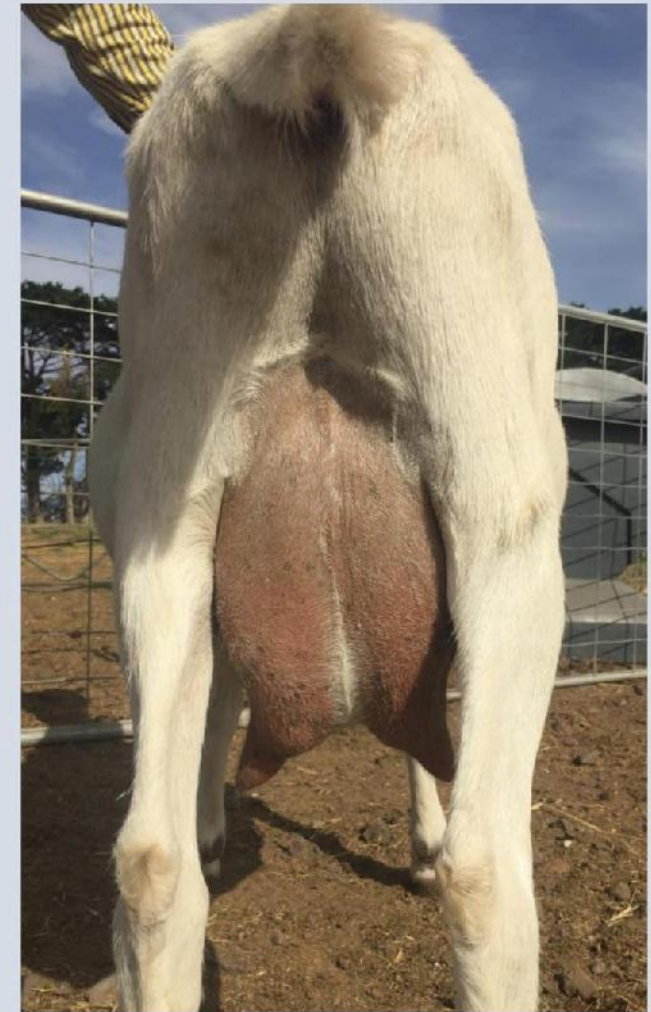
CLASS 12 2 OR MORE LACTATIONS BEST UDDER EXHIBIT 2

DOB 20/9/17

KIDDED 13/10/20

TARLEENA LADY LORETTA

LACTATION 2ND



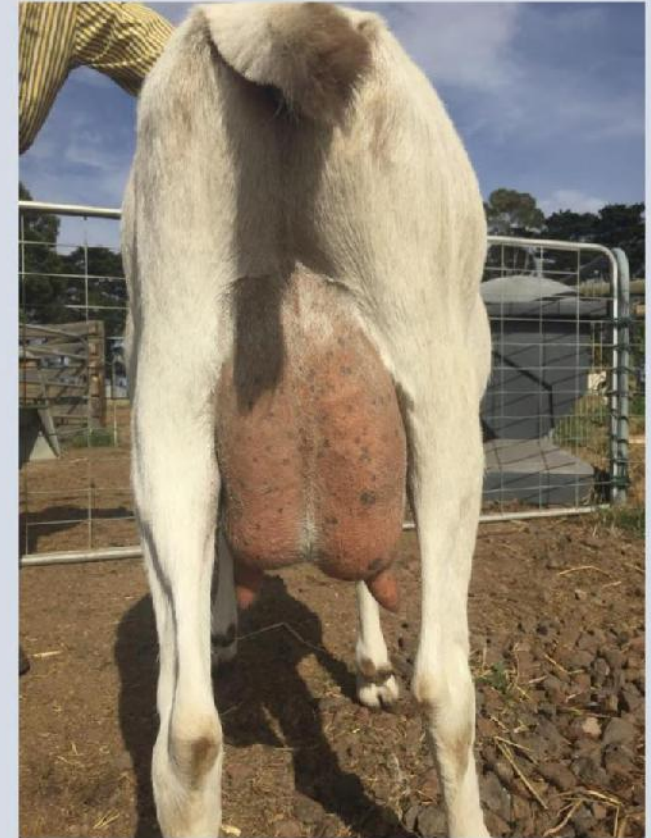
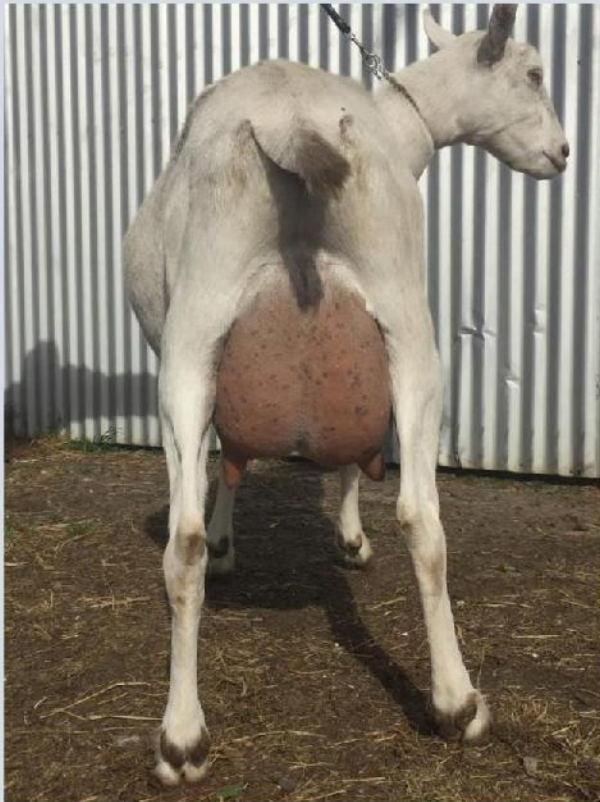
CLASS 12 2 OR MORE LACTATIONS BEST UDDER EXHIBIT 3

DOB 20/9/17

KIDDED 11/10/20

TARLEENA LADY LAURELLE

LACTATION 2ND

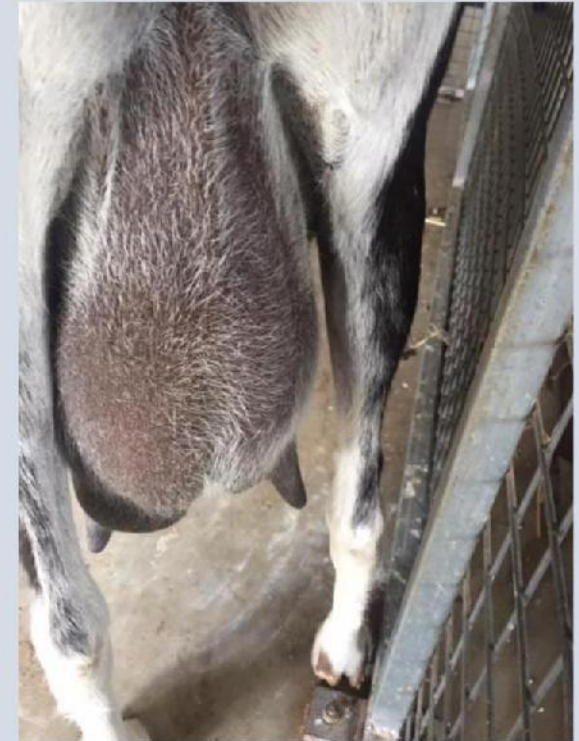


CLASS 12 2 OR MORE LACTATIONS BEST UDDER EXHIBIT 5

DOB 14/8/11

KIDDED 3/12/20 TALLULAH BELLA

LACTATION 6 TH



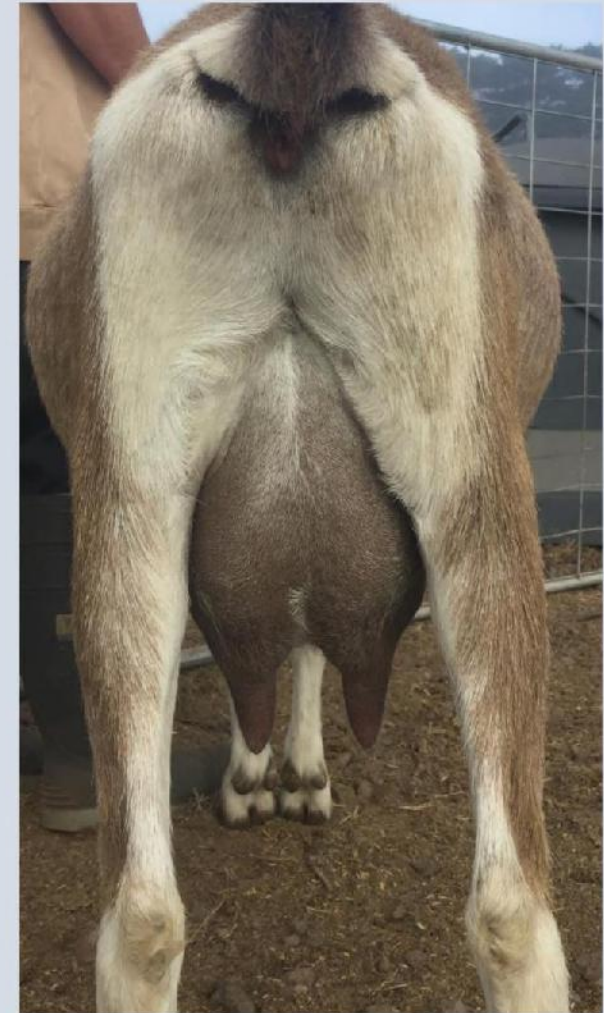
CLASS 12 2 OR MORE LACTATIONS BEST UDDER EXHIBIT 7

DOB 14/9/18

KIDDED 1/9/20

RODEN CACHE CHEYENNE

LACTATION 2nd



CLASS 12 2 OR MORE LACTATIONS BEST UDDER EXHIBIT 9

DOB 16/10/13

KIDDED 11/8/20 KUDUMBA MALKIJAH

LACTATION 5th



CLASS 12 2 OR MORE LACTATIONS BEST UDDER EXHIBIT 10

DOB 4/9/17

KIDDED 7/7/20 DOWN UDDER AMAIA

LACTATION 2ND

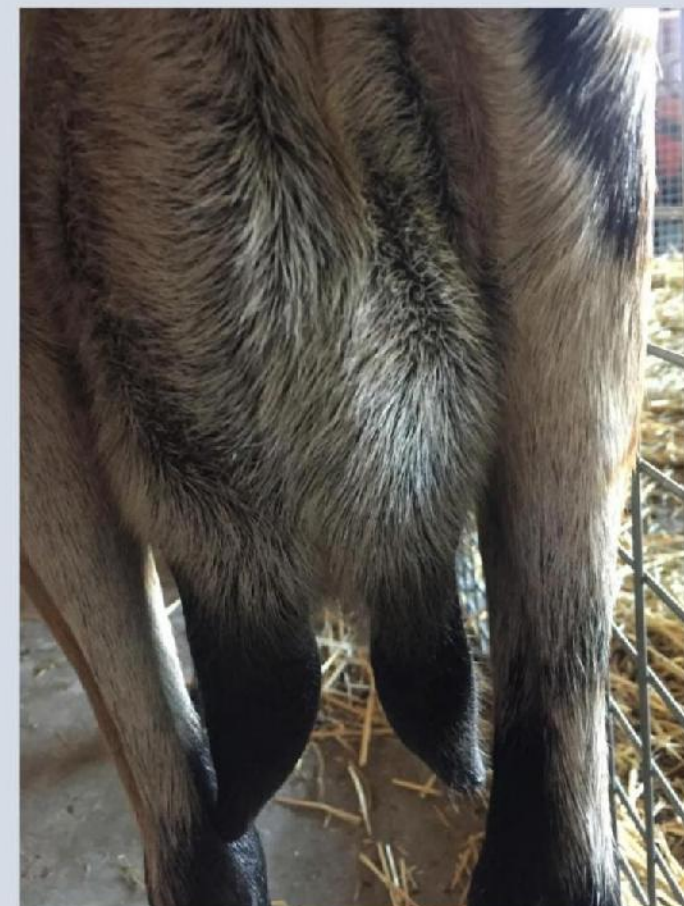


CLASS 12 2 OR MORE LACTATIONS BEST UDDER EXHIBIT 11

DOB 10/7/17

KIDDED 7/7/20 ANAMA SAPPHIRE

LACTATION 2nd

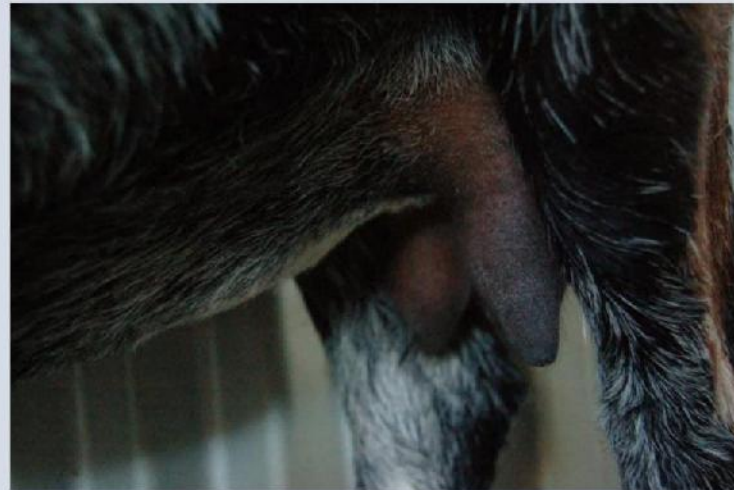
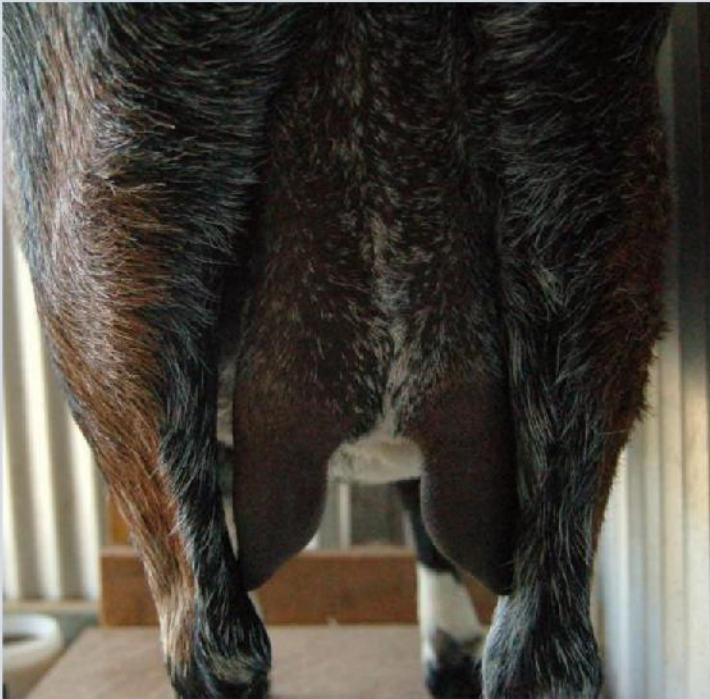


CLASS 12 2 OR MORE LACTATIONS BEST UDDER EXHIBIT 12

DOB 28/9/14

KIDDED /6/19 KILLARA RAM AISHA

LACTATION 3 RUNNING THROUGH



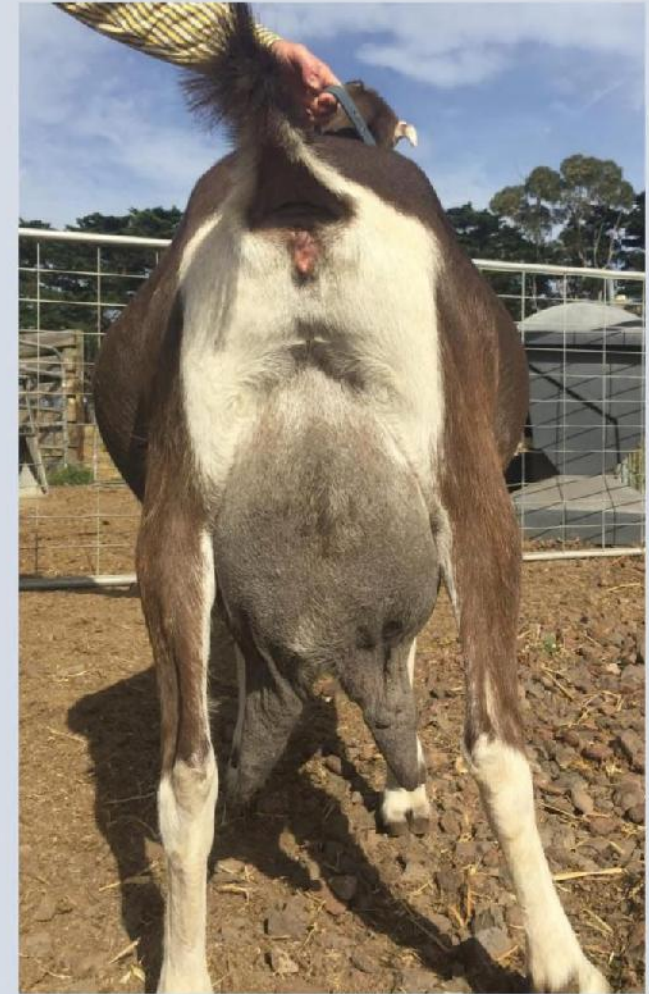
CLASS 12 2 OR MORE LACTATIONS BEST UDDER EXHIBIT 16

DOB 14/12/16

KIDDED 16/11/20

RODEN TT SELINA

LACTATION 2ND



2ND OR SUBSEQUENT LACTATION BEST UDDER

1ST

Exhibit 2

Wonderful broad attachment to the rear of the udder with good capacity. Medial ligament is strong and provides a great sole to the udder. Good forward attachment and great milk out. Balance and evenness of the udder was a feature

TARLEENA LADY LORETTA BELINDA CARDINAL

2ND

Exhibit 16

Great capacity and attached well to the barrel in the fore udder. Great shape and a wonderful milk out

RODEN TT SELINA BELINDA CARDINAL

3RD

Exhibit 3

A broad and extremely well attached udder to the rear. A strong fore udder attachment with good teat placement. A good milk out. Shape and evenness a real feature.

TARLEENA LADY LAURELLE BELINDA CARDINAL

4th

Exhibit 7

Great forward attachment with a balanced and even udder. Exceptional teat placement was a feature

RODEN CACHE CHEYENNE BELINDA CARDINAL.

Overall Best Udder

Exhibit 6

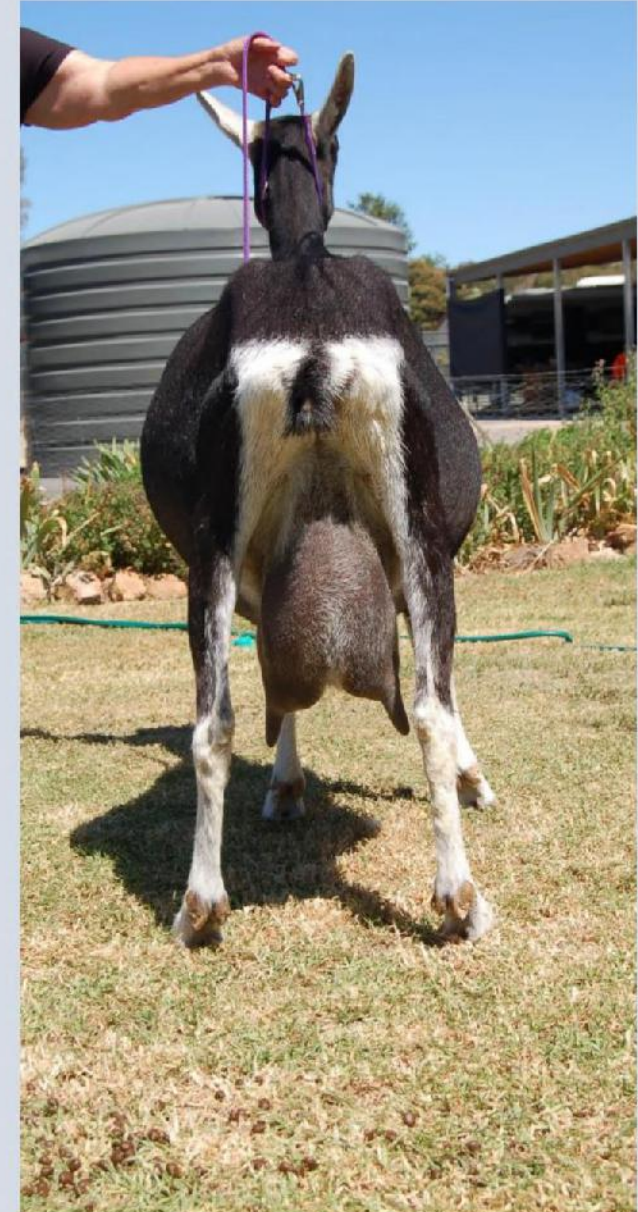
RODEN CACHE VERONA

CLASS 13 TYPE&PRODUCTION Q EXHIBIT NO 5

DOB 14/8/11

KIDDED 3/12/20 TALLULAH BELLA

LACTATION 6TH



CLASS 13 TYPE & PRODUCTION Q EXHIBIT NO 10

DOB 14/9/17

KIDDED 7/7/20 DOWN UDDER AMAIA

LACTATION 2ND

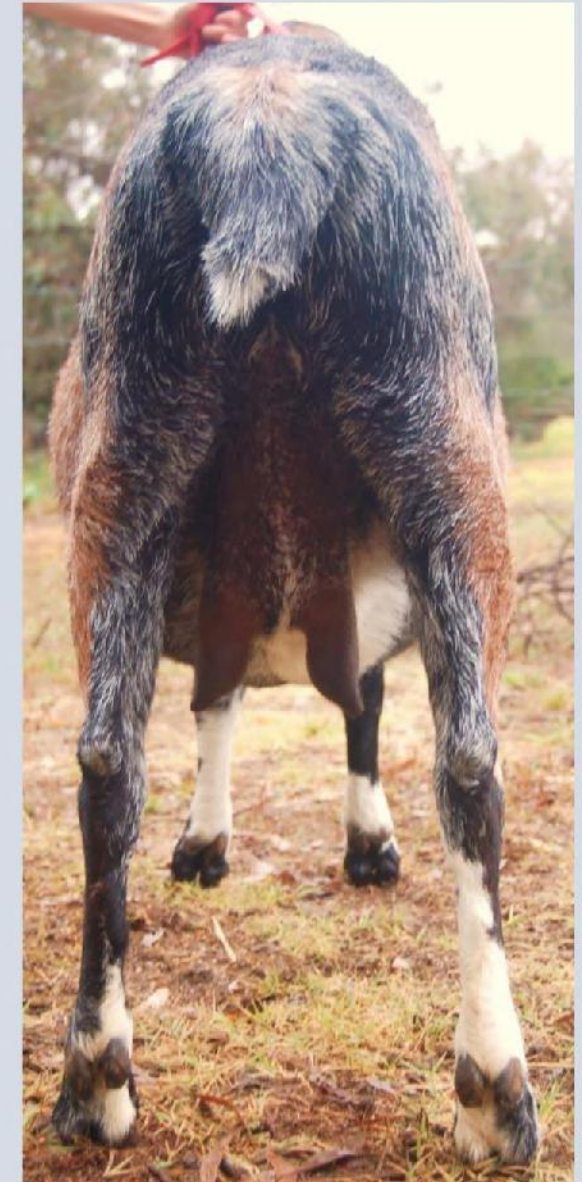


CLASS 13 TYPE&PRODUCTION Q NO 12

DOB 28/9/14

KIDDED JUNE 19 KILLARA RAM AISHA

LACTATION 3rd RUNNING THROUGH



TYPE POINTS

NO 5

10 points

NO 10

10 points

NO 12

10 points

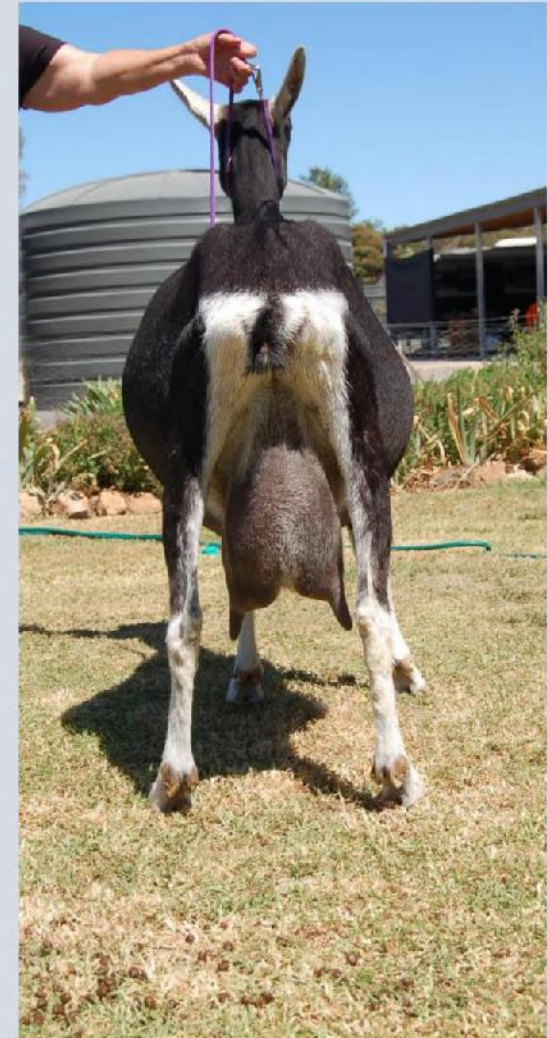
1st TALLULAH BELLA BRYONY LEPOIDEVIN

CLASS 13 TYPE&PRODUCTION HERD RECORDING EXHIBIT NO 5

DOB 4/8/11

KIDDED 3/12/20 TALLULAH BELLA

LACTATION 6TH



CLASS 13 TYPE & PRODUCTION HERD RECORDING EXHIBIT NO 10

DOB 14/9/17

KIDDED 7/7/20 DOWN UDDER AMAIA

LACTATION 2ND



TYPE POINTS

Type text here

NO 5

DOWN UDDER AMAIA

NO 10

DOWN UDDER AMAIA

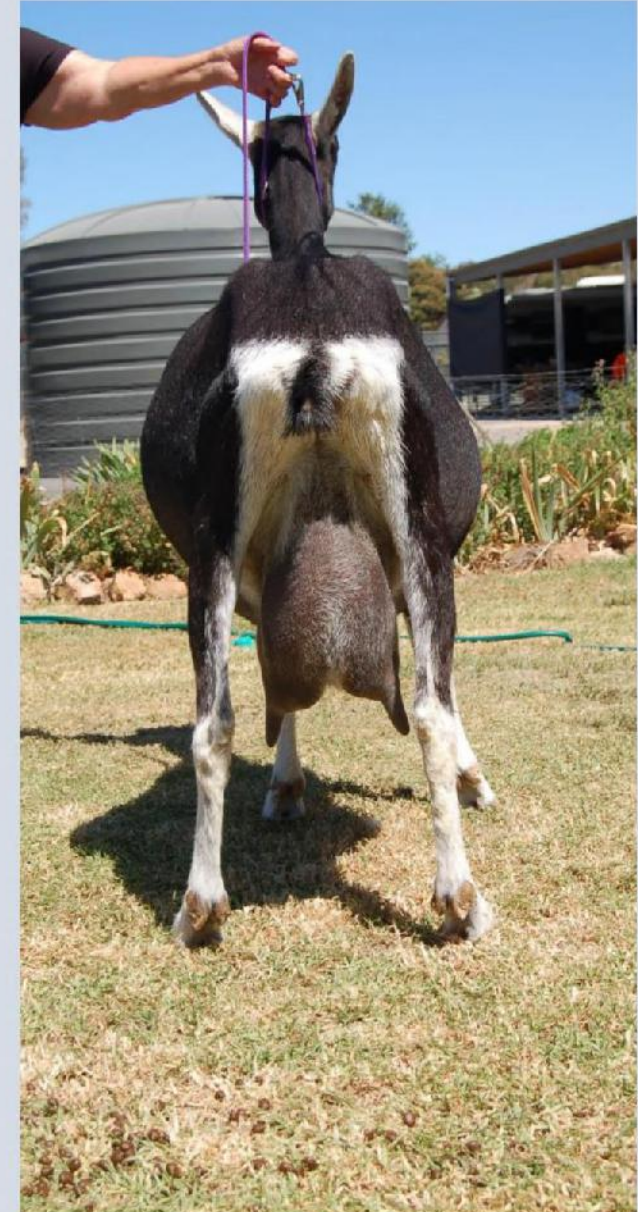
1st DOWN UDDER AMAIA

CLASS 14 VETERANDOE EXHIBIT NO 5

DOB 14/8/11

KIDDED 3/12/20 TALLULAH BELLA

LACTATION 6TH



CLASS 14 VETERAN DOE EXHIBIT NO 9

DOB 16/10/13

KIDDED 11/8/20 KUDUMBA MALKIJAH

LACTATION 5TH



VETERAN DOE

1ST

Exhibit 9

The youth and vitality of this doe is infectious. She retains the dairy glow of many younger veterans
KUDUMBA MALKIJAH CARRIE FLORANCE .

2ND

Exhibit 5

Type text here

It seems a shame that I can't give two firsts here. This veteran has the body shape, the confidence and dairy tools that should be invested in all goats - but rarely exist. A great veteran who holds her head proudly in this company.

ACH TALLULAH BELLA BRYONY LEPOIDEVIN

CHAMPION MILKING DOE

Exhibit 6 RODEN CACHE VERONA

When we talk of the spoils of youth, this doe has been blessed. She has such dairiness, grace, strength and milk potential as well as an extremely photogenic doe. It's rare that a first lactation is my champion but when qualities of this nature are displayed age is irrelevant. She simply is a breathtaking doe.

RESERVE CHAMPION MILKING DOE

Exhibit 16 RODEN TT SELINA

This doe has left a powerful impression. She has a dairy character that saw her second in the best udder but she has a breed potential for the La Mancha that will last into the future.

CHAMPION DOE EACH BREED FROM MILKER GOATLING AND DOE KID

CHAMPION SAANEN	Exhibit2	TARLEENA LADY LORETTA BELINDA CARDINAL
RESERVE CHAMPION SAANEN	Exhibit3	TARLEENA LADY LAURELLE BELINDA CARDINAL
CHAMPION BA	Exhibit5	ACH TALLULAH BELLA BRYONY LEPOIDEVIN
RESERVE CHAMPION BA	Exhibit	38 TALLULAH SEREN BRYONY LEPOIDEVIN
CHAMPION TOGGENBURG	Exhibit6	RODEN CACHE VERONA BELINDA CARDINAL
RESERVE CHAMPION TOGGENBURG	Exhibit 7	RODEN CACHE CHEYENNE BELINDA CARDINAL
CHAMPION ANGLO NUBIAN	Exhibit 10	DOWN UDDER AMAIA BRYONY LEPOIDEVIN
REERVE CHAMPION ANGLO NUBIAN	Exhibit 11	ANAMA SAPPHIRE BRYONY LEPOIDEVIN
CHAMPION LA MANCHA	Exhibit 16	RODEN TT SELINA BELINDA CARDINAL
RESERVE CHAMPION LA MANCHA	Exhibit 17	RODEN MALIBU BELINDA CARDINAL
CHAMPION NIGERIAN DWARF	Exhibit31	RODEN SQUEAK BELINDA CARDINAL
RESERVE CHAMPION NIGERIAN DWARF	Exhibit42	FIRST FLEET COOKIE BELINDA CARDINAL
CHAMPION ALPINE	Exhibit 18	CAROLANN PLAYGIRL KIRSTY STEPHENS
RESERVE CHAMPION ALPINE	Type text here	

BEST EXHIBIT FROM DOE, GOATLING, DOE KID AND BUCK

Exhibit 6 RODEN CACHE VERONA
BELINDA CARDINAL

BEST OPPOSITE SEX

Exhibit 56 RODEN SPIRIT TACOMA
BELINDA CARDINAL